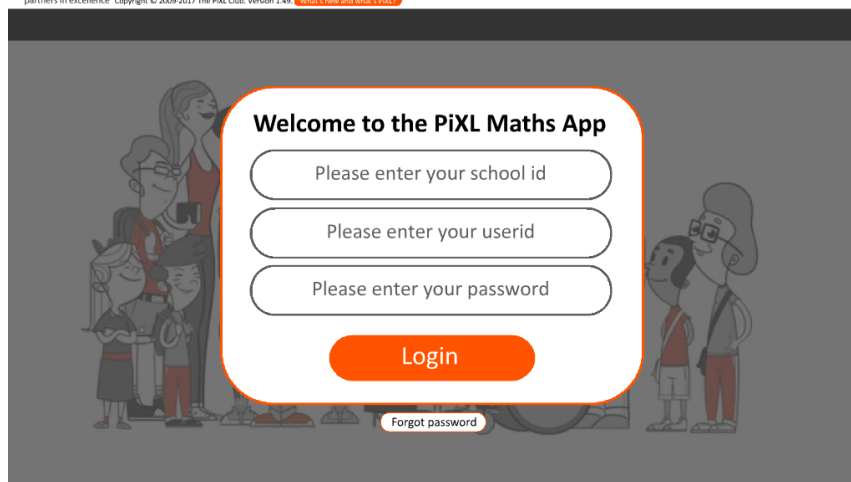


# USEFUL RESOURCES FOR MATHS AND THE LINKS YOU WILL NEED TO ACCESS THEM.

PiXLmaths

partners in excellence Copyright © 2009-2017 The PiXL Club. Version 1.49. [What's new and what's next?](#)



<https://mathsapp.pixl.org.uk/PMA.swf>

The PiXL Maths App (PMA) has a plethora of resources available to ALL students in the school. If you don't know your login, please ask any member of the Maths team. Particularly useful for year 11s are the Walking Talking Mocks (see below), and for all years, the Arithmetic section is ideal.

Login: The school id is **AC3282**. User id and password are both the same at first **IN MOST CASES, FOR OLDER STUDENTS**. This

is the surname followed by the first name initial. For example, John Smith would be **SMITHJ**. Please edit your profile and change your password on first use.

Students added individually such as those joining the school later will have automatically generated passwords, and you will need to see your teacher or Mrs Gibbons. **For younger year groups, the password will be the same as your username with your year of entry in front. Eg FREEMANM and 19FREEMANM. If in doubt, just ask.**

One of the most useful tools on PiXL is the Walking Talking Mock (WTM). This alongside Walking Talking Marking (WTMa) has videos showing how to tackle exam papers, and what the marker is looking for when marking exam papers. This gives a good indication of which marks are awarded for what. This can be found on the PMA by going to "Homework Tasks", and then "WTM/a".

Also, Acle Academy is taking part in the "PiXL WAVE" programme. When we run full sets of PPE exams at Christmas and Easter, the results are sent to PiXL where they are combined with those from hundreds of other schools. We then get a report saying how we are performing, and our students get individual consolidation tasks sent directly to their PMA profile. These are accessed through selecting "Gap Analysis", "My School Filter" and then choosing the relevant "FF" file.

That's not all. The same login details will get you on to the PiXL times tables app too. This features the opportunity to practice individual times tables and mixed questions as well as a number of games played against other students to win points for your school. These are "Raft Race", "Bounce" and "Survival".

Download this app now, or play it at

<https://timestable.pixl.org.uk/Timestables.html>



This is **ESSENTIAL** for all GCSE studies. It has copies of your full text books and homework books as well as answers. It also has links to related material on “MyMaths” and to videos showing you key skills. This is a MUST for plugging gaps in your knowledge. All year 10 and 11 students have access so see Maths staff if you forget your login.

Login: The school institution code is “nqf0”. (Careful, it’s a zero and not a letter “o”). The username and password are both the same at first. It is the first initial followed by the surname. Eg jsmith. You will be prompted to change your password on first use.

<https://www.kerboodle.com/users/login>



The next site is “Mathswatch”.


This has a Selection of very useful videos which show you step by step how to perform key skills. Attached to the videos are worksheets and interactive questions to try. To login to this, you need the site <https://vle.mathswatch.co.uk/vle/> The username will be your year you started year 7 (last 2 digits), followed by surname and forename initial with no capitals, eg 21studenta@acle. The password is the same, but this can be changed.



<https://www.mymaths.co.uk/>

The old favourite. You will know this from homework and every student can access the whole site at any time.

Login: The school username is “acle”, then the password is “access”. You get your personal login from Maths staff, but all students should know this off by heart.

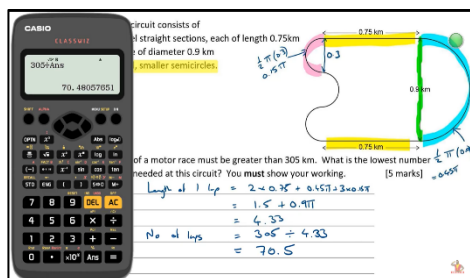
**OTHER USEFUL SITES**  has many useful videos covering just about any aspect of Maths at all levels. This includes many very good videos from the “Mr Barton Maths” website <http://www.mrbartonmaths.com/>

<http://www.emaths.co.uk/> This site has the old style SATs papers on it and is still a good resource for practising those KS3 skills. It is open to everyone without a login being necessary.

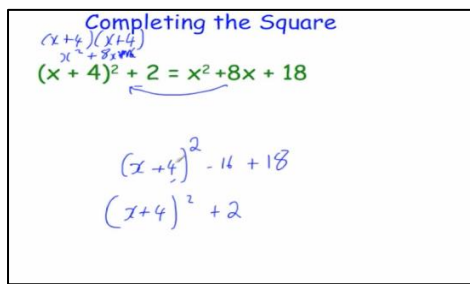
Another useful site is <http://bland.in/>. This has selections of past GCSE paper questions grouped together.

**Finally, arguably the most important sites.** Past papers from a number of previous years are available complete with mark schemes. A MUST for all year 11 students. No login required. You may find it easier to just Google “AQA past papers”, and Edexcel have some similar resources too that could still be useful for your revision.


# OTHER USEFUL RESOURCES FOR YEAR 11 MATHS STUDENTS



(Mr Tompkins EdTech)




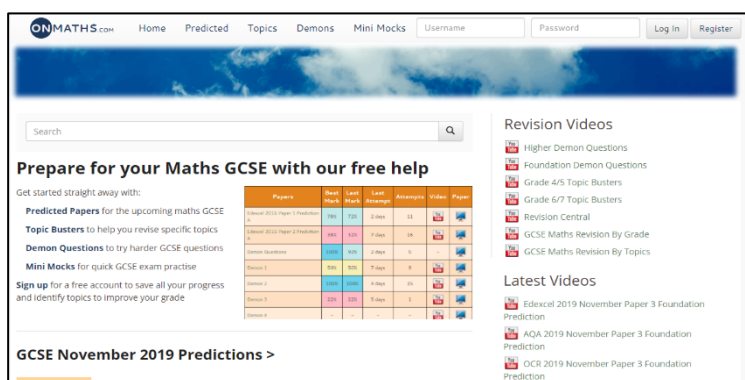
(CorbettMaths)

There are many videos available  which will help with everything from exam style questions to topic specific help. In particular, the following Youtube channels contain videos which are freely accessible.

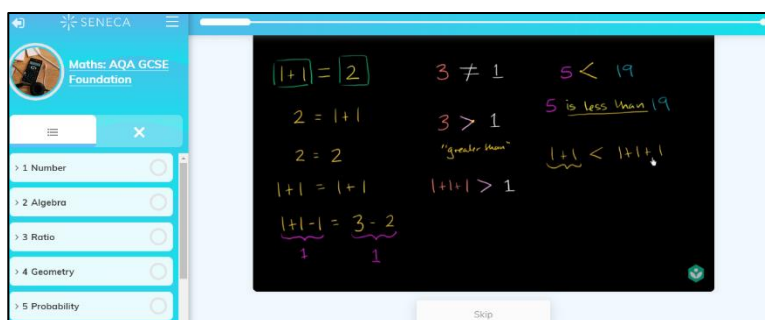
- Mr Tompkins EdTech – a channel with an extensive range of past papers and exam questions (Foundation and Higher).
- CorbettMaths – topic specific help (Foundation and Higher).
- Hegarty Maths – provides topic specific help which is suitable for those studying for the GCSE Higher paper.


Further to the resources suggested above, we also

have . This is ANOTHER FREE resource that can be accessed from any web browser. This has online GCSE papers, type in your answer, and it marks it for you! The sections titled “Mini Mocks” are particularly useful for quick, snappy revision.



L



 Learning provides a virtual platform for learning most subjects studied at GCSE level. Maths resources can be accessed for both Higher and Foundation tiers. This learning platform delivers the information required to master each topic and then will present questions based on that topic.

A login is required, however it is completely free and works via any email address!

**Feel free to explore all the resources in this document. If you encounter any issues, please see a member of the maths team.**

**Last Updated: 06/10/2021**