



Welcome

House session



Our Heads of House

Mr Stevenson



**HEAD OF
OLYMPUS**

Mr Gray



**HEAD OF
SNOWDON**

Mr Rayner



**HEAD OF
FUJI**

Mrs Smith



**HEAD OF
NEVIS**

**Miss
Perry-Warnes**



**HEAD OF
EVEREST**



Key Staff Members

Mrs Mollicone Attendance officer

Miss Thetford Learning mentor & wellbeing co-ordinator

Ms Vacca Pastoral Manager and Safeguarding officer

Mrs Pinfold AIM centre Manager

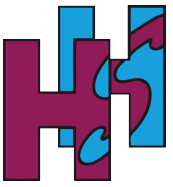
Mr Mullen Inclusion/ Detentions/ Pastoral

Mr Gardiner Assistant Head House

Ms Ford Assistant Head House

Miss Coubrough Assistant Principal (Behaviour/ Attendance and Safeguarding)

Miss McLellan Assistant Principal (SEND/ PP/ Admissions/ Transition)



Role of the Tutor

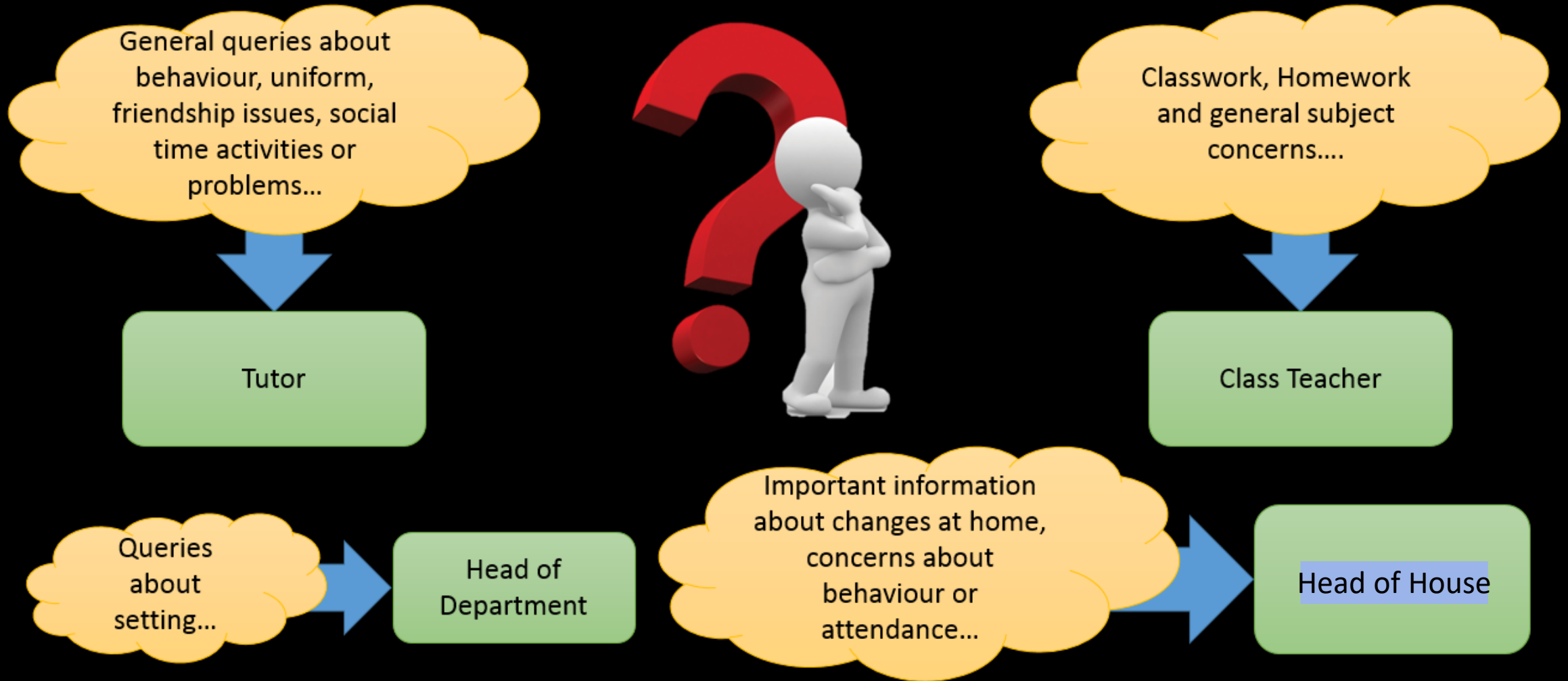
- Daily point of contact for students
- Guide
- Support
- Signpost
- Praise students doing well
- Challenge students when needed
- Encourage students to try new things
- Be contactable for parents and carers
- Build tutor spirit- house system



Role of the Head of House

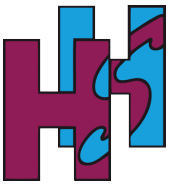
- Guide
- Support
- Signpost, e.g. Wellbeing
- Praise students doing well- rewards
- Challenge students when needed- sanctions
- Encourage students to try new things
- Be a point of contact for students, parents and carers
- Lead our experienced tutor team- build house team spirit
- Provide assemblies and tutor time activities that enrich and inspire
- Work closely with Heads of Department, SEND and SLT

Who should I contact?





Attendance and Behaviour



Rewards

- Students are awarded achievement points for progress and effort
- Positive notes home
- Hot Chocolate with the Principals
- Achievement certificates are awarded in tutor time and assemblies
- Rewards vouchers for tutor groups
- Gift Voucher 100% attendance prize draw
- Rewards activities in school for students with no behaviour marks
- Individual vouchers each week
- End of term Film and Popcorn events

Ready

Wear correct uniform at all times

Arrive at lessons on time

Come prepared with the correct equipment and attitude

Show determination to do your best

Respectful

Follow all instructions from staff, first time

Speak respectfully to all members of the school community

Use good manners and treat others with respect

Look after the school environment – keep it clean and litter free

Safe

Move sensibly around the site, following keep left and no entry signs

Do all you can to promote equality and fairness – help others who may need it

Make sensible choices when online

Keep hands, objects and inappropriate comments to yourself



Hellesdon High School

Part of the

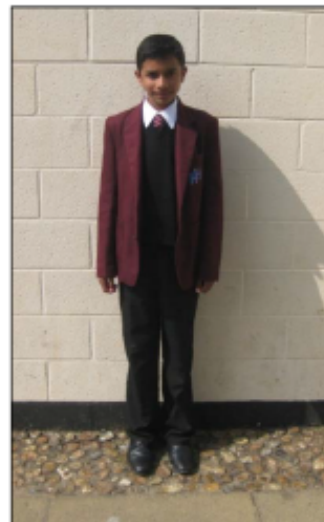
WENSUM TRUST



Uniform

Please view the [Uniform page](#) of our website for information on what to wear to school.

Note: Ties will now have a stripe with the colour of your child's house. Please ensure you buy the correct tie!



- Maroon Blazer with school badge.
- Black V-neck jumper, or a black V-neck cardigan (waist length) with (black) buttons may also be worn under the blazer.
*Note: Only Year 10 & 11 students are permitted to wear their black jumper without the blazer.
- White collared shirt, long or short sleeved (no t-shirts, roll necks or polo shirts), tucked into trousers/skirt. No coloured t-shirts under white shirts
- Maroon/sky-blue school tie.
- Black trousers: no jeans, jeggings, hipsters, cropped trousers, shorts, skinny/tight fitting or stretch material.
- Black skirts: knee length; no tight fitting, jersey or stretch material. A-line skirts recommended - no straight or flared designs.
- Black shoes. No trainers, boots, high heels, open toes, slip-ons, canvas shoes or plimsolls.

Please note outside coats must be left in cloakroom or in lockers, and not worn

Additional compulsory items:

- Craft apron for science and art
- Pen, pencil and ruler
- Calculator
- Bag/backpack of suitable size for books and equipment (no handbags or carrier bags)

PE Kit:

- Rugby shirt (school colours)
- HHS sky-blue polo shirt
- Black shorts
- HHS sports socks
- Trainers or football boots
- HHS black trousers (optional)
- HHS black rain jacket (optional)

Please note that we strongly recommend all school uniform and PE kit is labelled with student names.

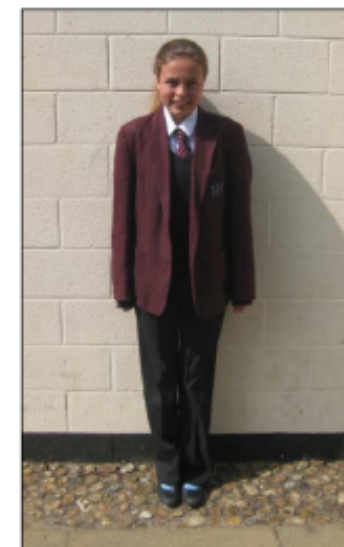
Sensible Hairstyles

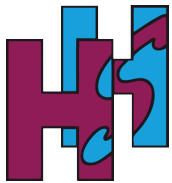
No extreme hairstyles – No shaven heads (fully or partially), tramlines or razor cuts. Natural hair colours only. Please note that the Head of School reserves the right to make decisions about all hairstyles.

Make-up – Discreet, light make-up only, no coloured nail varnish or acrylic nails.

Jewellery – Only in moderation. One necklace, one pair of stud/sleeper earrings (in earlobes only), one discreet ring, one simple bracelet and a watch are permitted. All jewellery must be able to be removed for PE.

Facial Piercings – These will not be allowed and must be removed (including tongues, eyebrows, lips and nose).





Attendance

Attendance Percentage		Days missed over a school year
100%		0 days
95%		10 days
90%		20 days
85%		30 days
80%		40 days

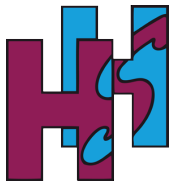
How can parents promote good attendance?

- Communication with form tutor and head of house about any issues that may prevent attendance at school.
- If students have minor illnesses or ailments, encourage them to attend and share information with the medical room lead.
- Avoid taking holidays in term time.
- Celebrate good attendance when students bring home 100% attendance certificates.
- Booking medical appointments at the end of the school day.



Mobile Phones

- Use of mobile phones is not be permitted on school site
- Students will be able to bring their phone in their bag if it is needed on the way to/from school, but they should not remove it from their bag at any point during the school day
- If phones are seen / heard, students will receive a 20 minute detention



Any questions?

Please contact your child's Head of House:

vstevenson5nrd@nsix.org.uk – Olympus

lperrywarn7hrl@nsix.org.uk – Everest

drayner7nre@nsix.org.uk – Fuji

asmith2xrb@nsix.org.uk – Nevis

sgray6yr9@nsix.org.uk – Snowdon