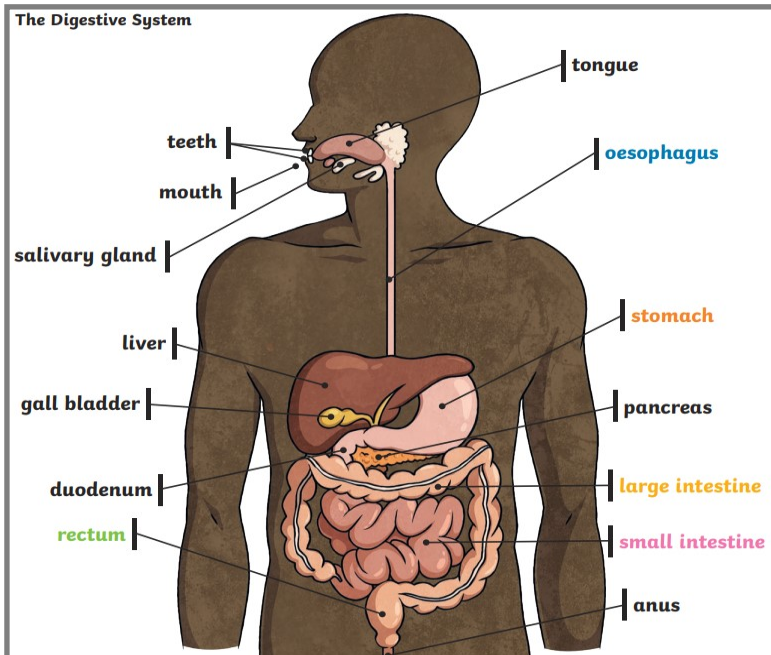


Knowledge Organiser — Animals Including Humans —Year 4

The Digestive System



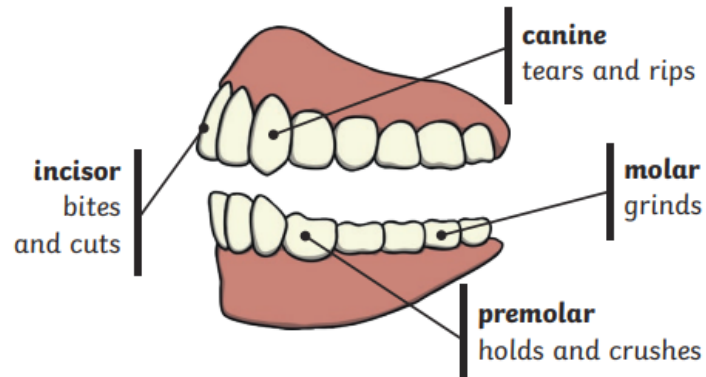
Key Vocabulary

digestion	Breaking down of food by the body, so that it can be used.
large intestine	Part of the intestine where water is absorbed from the remaining waste food. Faeces (bodily waste) are formed here.
oesophagus	A muscular tube which moves food from the mouth to the stomach.
rectum	Part of the digestive system where faeces are stored before leaving the body through the anus.
small intestine	Part of the intestine where nutrients are absorbed into the body.
stomach	An organ in the digestive system where food is broken down with stomach acid and by being churned around.

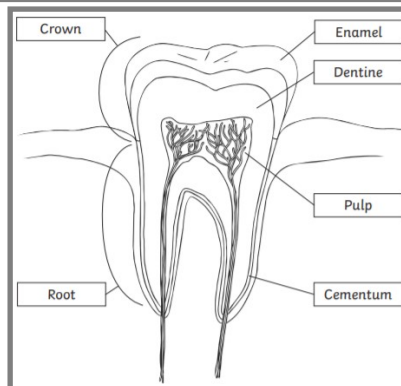
- The smell of food triggers saliva to be produced.
- The digestive system begins with the mouth and teeth where food is chewed.
- Saliva is mixed with the food which helps to break it up.
- When the food is small enough to be swallowed, it is pushed down the oesophagus by muscles to the stomach.
- In the stomach, food is mixed further.
- The mixed food is then sent to the small intestine which absorbs nutrients from the food.
- Any leftover broken down food then moves on to the large intestine.
- The food minus the nutrients arrives in the rectum where muscles turn it into faeces. It is stored here until it is pushed out by the anus. This is called excretion.

Knowledge Organiser — Animals Including Humans —Year 4

Human Teeth and Their Functions



Some people have wisdom teeth but they have no function now.

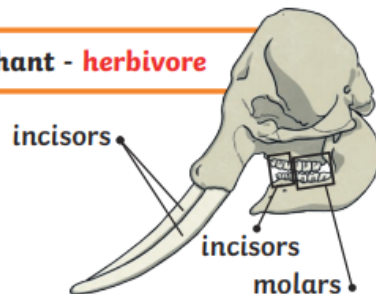


Key Vocabulary

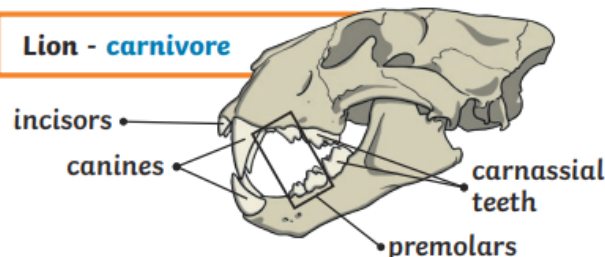
cementum	The layer which covers and protects the root of the tooth.
crown	The part of the tooth above the gum that you can see.
dentine	A hard substance which protects the inside of the tooth.
enamel	The hard white substance that forms the outer layer of a tooth.
pulp	The part of the tooth which contains blood vessels and nerves. The blood vessels keep the tooth alive. The nerves send messages to your brain, for example whether you are eating something very hot or very cold.
root	The part of the tooth hidden under the gum.
carnivore	An animal that feeds on other animals.
herbivore	An animal that eats plants
omnivore	An animal that eats plants and animals.

The teeth of an animal are designed to eat different foods depending on the diet of the animal. Examples of a **herbivore**, a **carnivore** and an **omnivore** skull:

Elephant - **herbivore**



Lion - **carnivore**



Human - **omnivore**

