



Welcome to Garrick Green Infant School

Garrick Green, Garrick Green,
Where we work as one big team.
It's a good, fun, caring school,
We welcome everyone.

We think learning is such fun!





Coming into School

This is where you will come into school. You will walk through the smaller green gate and then through the large grey metal gate.

As you walk into the playground you will see the whole school. Reception children line up at the far end of the school building near the grass.





Mrs Dewing Head Teacher

Hi, my name is Mrs Dewing and I am the Head Teacher. I mostly work in my office doing lots of jobs like making sure you are happy and safe and sorting out the school money. Some days I do assembly where you come to the hall and I read you a story. I like to visit you in your classrooms to see what you are doing. I love it when I can give you a Team Point for some great learning or kind behaviour. I can't wait to meet you all properly!







Olive Class



Miss Banner
teaches on Monday,
Tuesday and
Wednesday



Mrs Smalley teaches
on Thursday and
Friday

You can hang your coat up in the cloakroom and your wellies go on the floor.



You can put your
book bag in the blue
boxes.

To the right is
where you can wash
your hands and go
to the toilet.



The Carpet Area

This is the carpet where we all sit and listen to Miss Banner and Mrs Smalley reading stories.

We also have lots of lovely toys for you to play with.





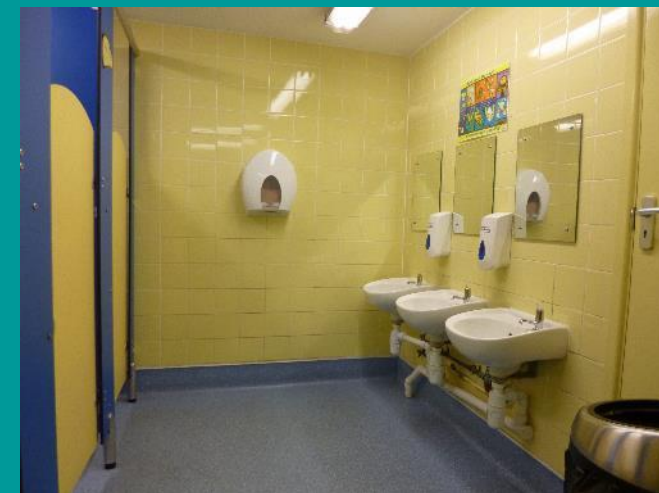
Jade Class



Mrs Prophet



You can hang your coat up in the cloakroom and put your wellington boots on the wellie rack. Your book bag goes in the coloured boxes. To the right is where you can wash your hands and go to the toilet.



The Carpet Area

This is the carpet where we all sit in a big circle and listen to Mrs Prophet reading stories. We also have lots of creative activities in our class for you to explore.



The Library



We have lots of books for you to read at school and to share at home.



The Hall

We have assemblies in here and it is also where we eat our lunch, then go out to play.



Reception Outdoor Area



Move the pipes on our water feature and see the water travel in different directions.



We also have a lovely forest area where you can climb and make dens. You can make an assault course with the different tyres



This is our stage area. There are musical instruments that you can sing and dance on the stage with.

Reception Outdoor Area



This is our climbing structure. It is great for developing gross motor skills.



This is our willow tunnel and garden area. Lots of exploring and fun to be had here.

The Main Playground



This is where you will stand and wait in the morning with your adult and play at lunchtime break. We have a climbing frame, a trim trail, woods to explore in, tyres to jump on and lots of grass to run around. There is also a shed full of playground toys. Wellies must be worn on the grass. On the playground, it is walking only at all times. The other rule is...you must have fun!



The School Garden



This is our school garden which we are very proud of. Here we grow lots of vegetables, plants and flowers. We also have a pond which has lots of creatures in it including frogs and newts.



**We can't wait to
show you around!**