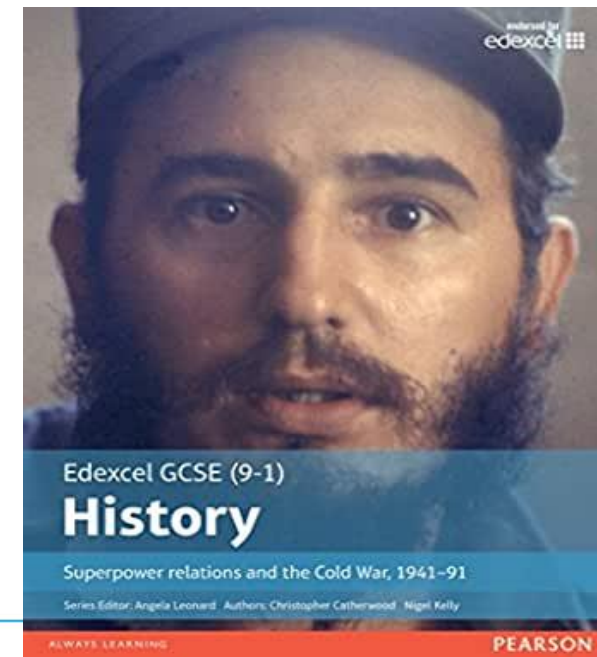
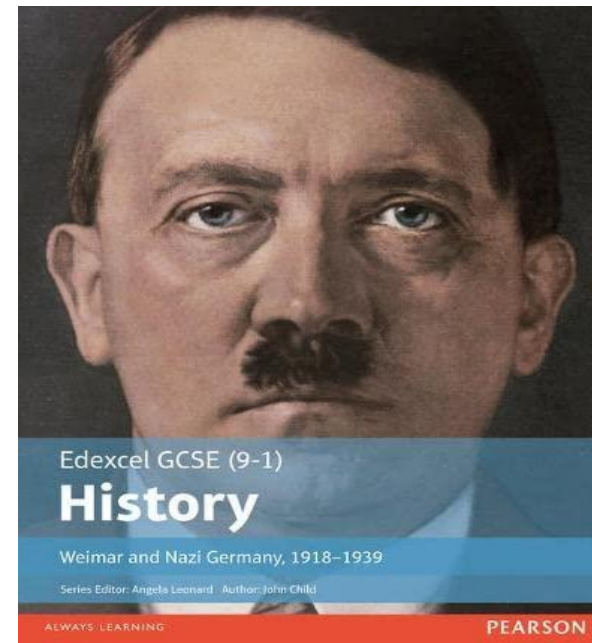
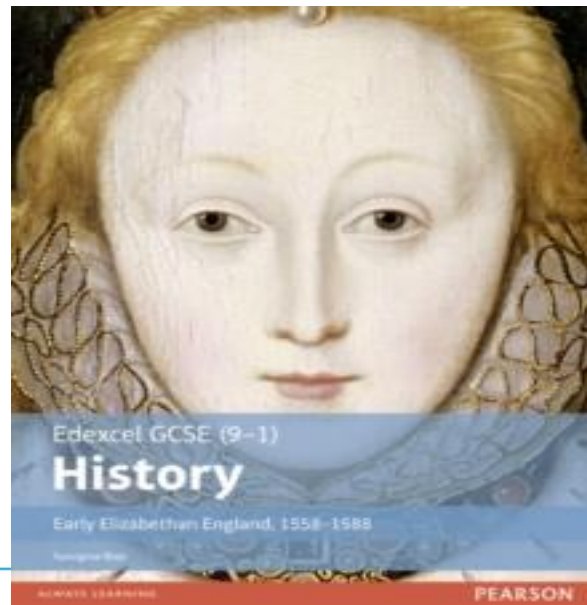
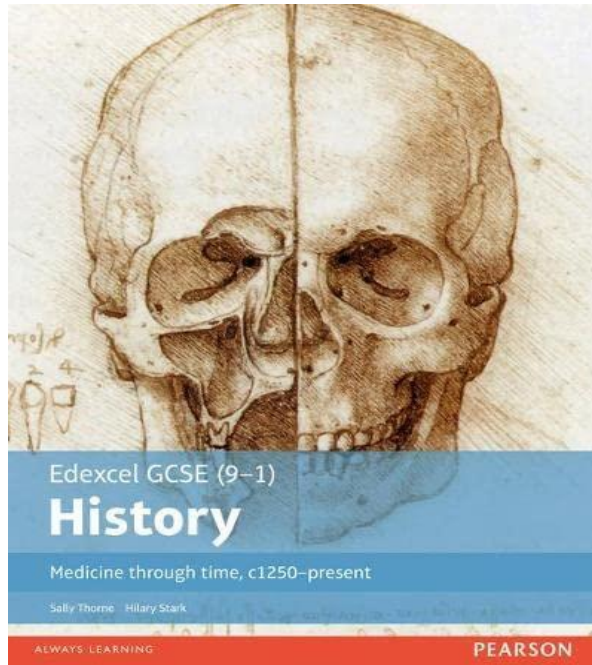


# GCSE History Revision



We are part of...

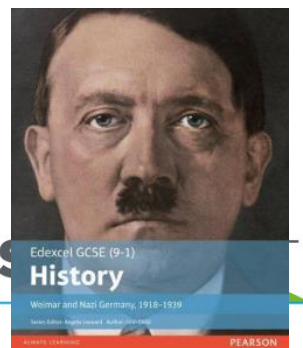
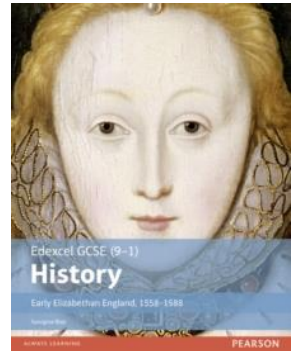
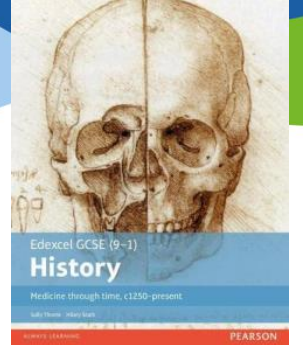
# Acle Academy

## GCSE Course



□ Three exam papers; four units covered

- **Paper 1:** Medicine through time, c.1250-present and the British Sector of the Western Front, 1914-1918: injuries, treatment and the trenches
- **Paper 2:** Early Elizabethan England, 1558-1588 and Superpower Relations and the Cold War, 1941-91
- **Paper 3:** Weimar and Nazi Germany, 1918-1939



Y10

Y11

We are part of...

WENS



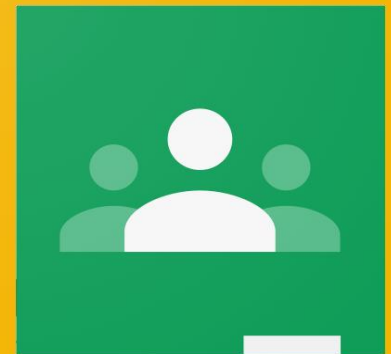


# REVISION: resources

You will be provided with a folder this year – use this to keep your revision resources and exam question feedback in – this will give you a revision bank to refer back to throughout Y11.

Revision guides and other resources are on your Google Classroom – be proactive and use these. If you miss any lessons, catch up using the lesson resources here too.

You can use GCSEpod independently throughout this year. Identify topics you need any extra support with, watch the pods and use the check and challenge questions to test what you've learned.





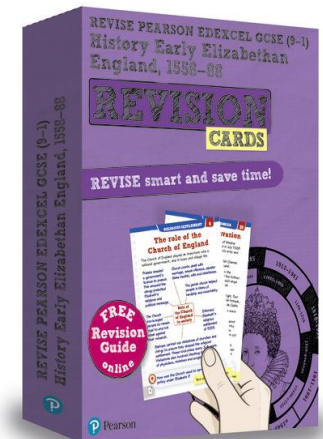
## Revision Zone

<https://drive.google.com/drive/u/1/folders/1z3XTrwoQMsd41F5X7DimpohJ0oDx-AV0>

Access for revision guides and work booklets, past papers, model answers and more for all four units of the History GCSE course.

Sets of revision flashcards for each unit are also available to purchase via Scopay – **for Y10 the Medicine Through Time set is your priority.**

We are part of...



## Battlefields Trip

Wed 17<sup>th</sup> - Fri 19<sup>th</sup> January 2024

For those of you attending, this will be an invaluable opportunity to develop your knowledge of the First World War, wartime advancements in medicine and the impact of these on treatment of injuries on the Western Front.

Make the most of this opportunity to place your learning in context!

We are part of...



**WENSUM TRUST** 

# Y10 Assessments in History

A formal assessment on Medicine on the British Sector of the Western Front (1914-18) will be completed in the Spring Term.

A formal mock exam on Early Elizabethan England (1558-1588) will be completed in the Summer Term.

Other smaller assessments will be completed in lessons and for home learning to practice and develop exam skills.





# Progression in History

In KS3 you have learned the fundamental skills needed to access and explore history, e.g. source analysis, evaluation of interpretations, chronology etc.

At GCSE, these key skills are developed further and used to form the basis of the exam questions you will answer at the end of Y11 – you will need to spot patterns and trends, analyse change and continuity, cause and consequence, similarity and difference and significance across the four units of the course.



## Links to careers

Law  
Television/Film  
Journalism  
Tourism  
Local government  
Accountancy  
Psychology  
Author  
University lecturer

Business management  
Galleries  
Teaching  
ICT  
Archives  
Media  
Politics/Prime Minister  
Museum curator  
Architect

Conservation  
Vlogging/Blogging

***The options are  
endless!***



# Y10 GCSE Geography Revision



# Acle Academy

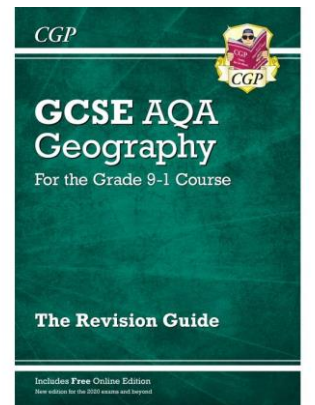
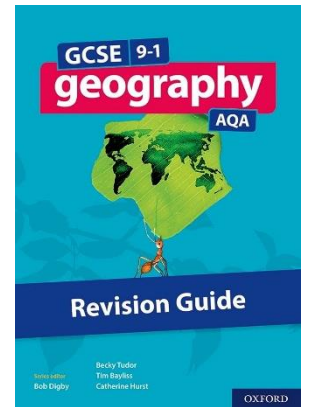
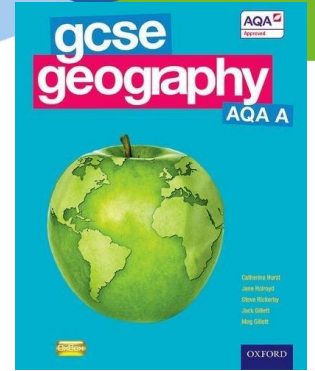
## GCSE Course

□ Three exam papers; three units covered

- Paper 1: Unit 1: Living with the physical environment; 3 sections, *Section A: The challenge of natural hazards* (tectonic hazards, weather hazards and climate change), *section B: The living world* (Ecosystems, Tropical rainforests and cold environments) and *section C: Physical landscapes in the UK* (UK physical landscapes, coastal and river landscapes)
- Paper 2: Unit 2: Challenges in the human environment; 3 sections, *Section A: Urban issues and challenges*, *Section B: The changing economic world* and *section C: The challenge of resource management with focus on Food*.
- Paper 3: Unit 3: Geographical Applications; 2 sections, *Section A: Issue evaluation (pre-release booklet)* and *section B: Fieldwork*.

*Year 9/10 units*   *Year 10/11 units*

We are part of...



**WE**



# Geography syllabus & Assessment Objectives

## GCSE Geography (8035)

<u>PAPER 1</u> Living with the physical environment	<u>PAPER 2</u> Challenges in the human environment	<u>PAPER 3</u> Geographical Applications
<b>CHALLENGE OF NATURAL HAZARDS</b> <ul style="list-style-type: none"> <li>Tectonic hazards</li> <li>Weather hazards</li> <li>Climate change</li> <li>Geographical skills</li> </ul>	<b>URBAN ISSUES &amp; CHALLENGES</b> <ul style="list-style-type: none"> <li>Urban growth</li> <li>Urban change in UK cities</li> <li>Sustainability</li> <li>Geographical skills</li> </ul>	<b>ISSUE EVALUATION,</b> <ul style="list-style-type: none"> <li>Critical thinking &amp; problem solving to a geographical issue provided by the exam board.</li> </ul>
<b>LIVING WORLD</b> <ul style="list-style-type: none"> <li>Ecosystems</li> <li>Tropical rainforests</li> <li>Cold environments</li> <li>Geographical skills</li> </ul>	<b>THE CHANGING ECONOMIC WORLD</b> <ul style="list-style-type: none"> <li>Economic development</li> <li>Social, economic &amp; cultural change</li> <li>Economic features of the UK</li> <li>Geographical skills</li> </ul>	<b>FIELDWORK &amp; SKILLS</b> <ul style="list-style-type: none"> <li>Unseen fieldwork in contrasting environments (coast &amp; city)</li> <li>Geographical skills</li> </ul>
<b>PHYSICAL LANDSCAPES OF THE UK.</b> <ul style="list-style-type: none"> <li>UK physical landscapes</li> <li>Coastal landscapes</li> <li>River landscapes</li> <li>Geographical skills</li> </ul>	<b>THE CHALLENGE OF RESOURCE MANAGEMENT</b> <ul style="list-style-type: none"> <li>Resource management</li> <li>Food</li> <li>Geographical skills</li> </ul>	
Worth 35% & 88 (+3SPG) marks	Worth 35% & 88 (+3SPG) marks	Worth 30% & 76 (+6 SPG) marks
1 hour 30 min exam	1 hour 30 min exam	1 hour 30min exam (extra 30mins now added- 2024)

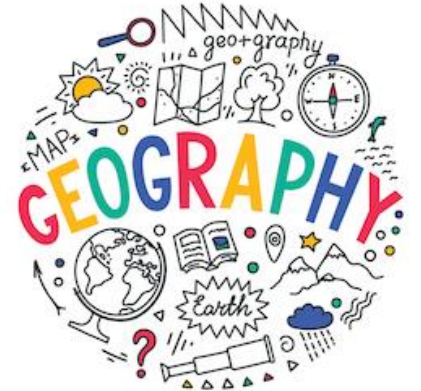
### Assessment Objectives (AOs)

Assessment objectives (AOs) are set by Ofqual and are the same across all GCSE Geography specifications and all exam boards.

The exams will measure how students have achieved the following assessment objectives.

- **AO1:** Demonstrate knowledge of locations, places, processes, environments and different scales (15 % of exam).
- **AO2:** Demonstrate geographical understanding of: concepts and how they are used in relation to places, environments and processes; the interrelationships between places, environments and processes (25 % of exam).
- **AO3:** Apply knowledge and understanding to interpret, analyse and evaluate geographical information and issues to make judgements (35 %, including 10 % applied to fieldwork context(s)).
- **AO4:** Select, adapt and use a variety of skills and techniques to investigate questions and issues and communicate findings (25 %, including 5 % used to respond to fieldwork data and context(s)).





## REVISION: little and often

There are **three separate units of content across three exam papers**: **variety of question stems and units** that you need to be familiar with – you do not want to leave this all until Y11.

The creation of revision resources, use of GCSEpod and practice exam questions will be built into your home learning programme throughout this year.

You should be completing independent revision of your own too – the more you do this year, the easier Y11 will be.

# Acle Academy REVISION: resources

You will be given regular home learning using a range of sources such as revision websites and exam question practice with feedback.

Revision guides and other resources are on your Google Classroom – be proactive and use these. If you miss any lessons, catch up using the lesson resources here too.

You can use GCSEpod independently throughout this year. Identify topics you need any extra support with, watch the pods and use the check and challenge questions to test what you've learned.



## WEBSITES

[www.geographycat.co.uk](http://www.geographycat.co.uk) -great revision tips, printable flashcards & exam practice.

[www.rgs.org](http://www.rgs.org) -Royal Geographical Society

[www.internetgeography.net](http://www.internetgeography.net) – internet geography, exam practice, quizzes

[www.geoggle.co.uk](http://www.geoggle.co.uk) – audio clips, videos, downloadable worksheets, recall quizzes

## YOUTUBE

Mr B -AQA Geography- covers every topic on the syllabus.

Ramsey Geography

## INSTAGRAM

mr\_b\_btecpe -AQA Geography revision of all topics & exam techniques

ramsey\_geography -Revision tips paper by paper, exam tips

geography\_cat -in the run up to the exams she posts 3 revision cards per day on all topics. These can be screen shot & used.

Internetgeography

mrvisgeography

Geography\_explained\_online

gcsegeo

# Instagram, You Tube sites for Geography revision



# School revision resources



**AQA** Realising potential

2021/22 exam changes

Contact us About us

Subjects Qualifications

[Find past papers and mark schemes](#)

## Find past papers and mark schemes

Find past papers and mark schemes for your exams, and specimen papers for new courses.

**Find papers**

Subject

Qualification

Specification

Series

[Create custom material for teaching, homework and assessment.](#)

## AQA past papers

# gcsepod

education on demand



# Y10 Assessments in Geography

End of unit tests will be completed across terms to provide regular feedback on exam technique

Other smaller assessments will be completed in lessons and for home learning to practice and develop exam skills.

There is also a whole mock paper in the Summer term as well.





# Progression in Geography

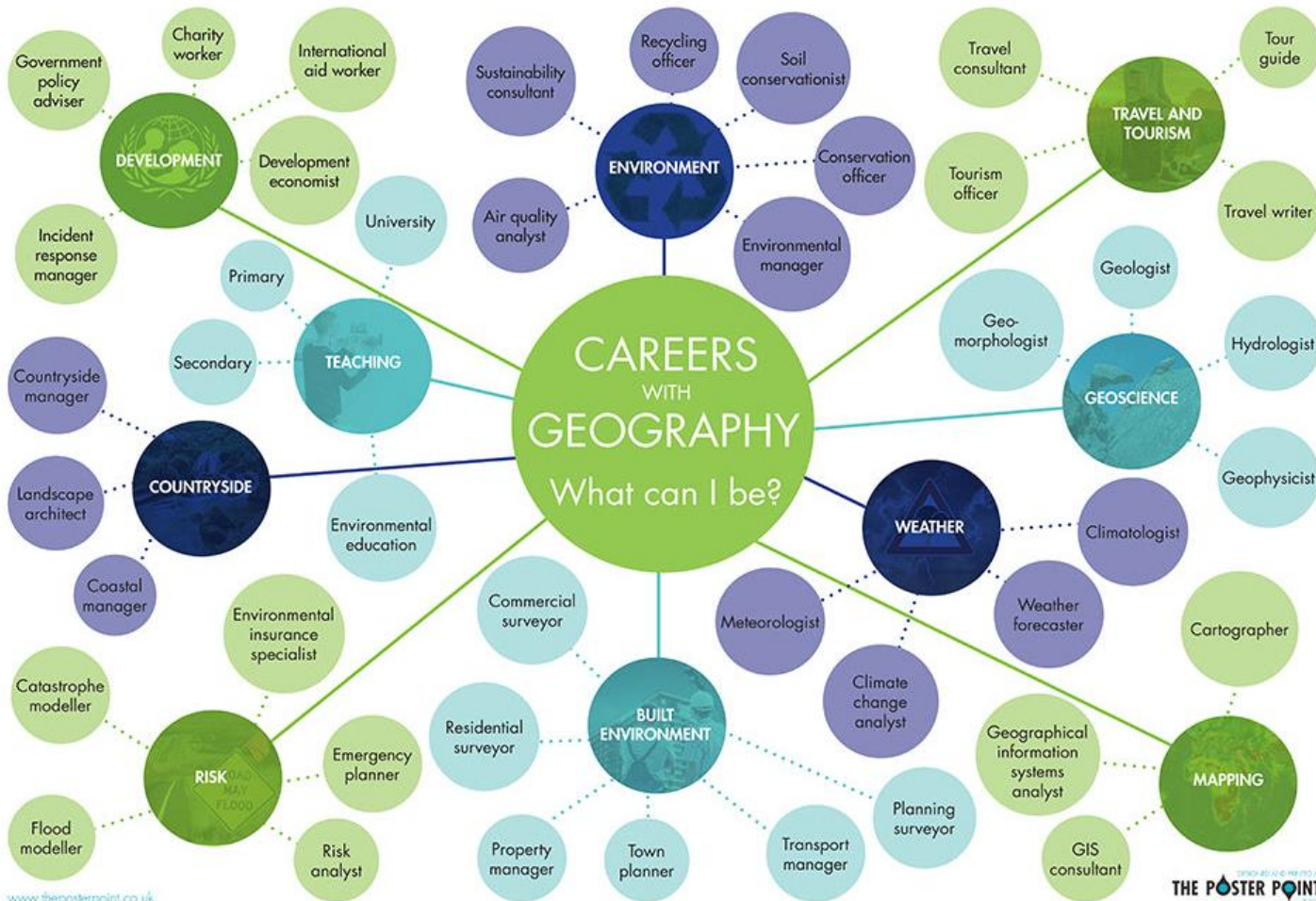
In KS3 you have learned the fundamental skills needed to access and explore geography, e.g. map skills, geographical processes, assess and evaluate sources or figures and case study examples focusing on specific locations and themes.

At GCSE, these key skills are developed further and used to form the basis of the exam questions you will answer at the end of Y11 – you will need to apply geographical knowledge and processes to answer a range of questions sometimes using figures/data/maps as well as demonstrate understanding in longer answers using case studies.



## Links to careers

*The options  
are endless!*





# Bonjour! Willkommen!



YEAR 10  
INFORMATION EVENING



## Specification at a glance

This qualification is linear. Linear means that students will sit all their exams at the end of the course.

## Subject content

### Core content

Students study all of the following themes on which the assessments are based.

Theme 1: Identity and culture

Theme 2: Local, national, international and global areas of interest

Theme 3: Current and future study and employment

## Assessments

GCSE German has a Foundation Tier (grades 1–5) and a Higher Tier (grades 4–9). Students must take all four question papers at the same tier. All question papers must be taken in the same series.

## Paper 1: Listening

### What's assessed

Understanding and responding to different types of spoken language

### How it's assessed

- Written exam: 35 minutes (Foundation Tier), 45 minutes (Higher Tier)
- 40 marks (Foundation Tier), 50 marks (Higher Tier)
- 25% of GCSE

(Each exam includes 5 minutes' reading time of the question paper before the listening stimulus is played.)

### Questions

#### Foundation Tier and Higher Tier

- Section A – questions in English, to be answered in English or non-verbally
- Section B – questions in German, to be answered in German or non-verbally

### **What's assessed**

Communicating and interacting effectively in speech for a variety of purposes

### **How it's assessed**

- Non-exam assessment
- 7–9 minutes (Foundation Tier) + preparation time
- 10–12 minutes (Higher Tier) + preparation time
- 60 marks (for each of Foundation Tier and Higher Tier)
- 25% of GCSE

### **Questions**

#### **Foundation Tier and Higher Tier**

The format is the same at Foundation Tier and Higher Tier, but with different stimulus questions for the Photo card and different stimulus materials for the Role-play. The timings are different too:

- Role-play – 15 marks (2 minutes at Foundation Tier; 2 minutes at Higher Tier)
- Photo card – 15 marks (2 minutes at Foundation Tier; 3 minutes at Higher Tier)
- General conversation – 30 marks (3–5 minutes at Foundation Tier; 5–7 minutes at Higher Tier)



### What's assessed

Understanding and responding to different types of written language

### How it's assessed

- Written exam: 45 minutes (Foundation Tier), 1 hour (Higher Tier)
- 60 marks (for each of Foundation Tier and Higher Tier)
- 25% of GCSE

### Questions

#### Foundation Tier and Higher Tier

- Section A – questions in English, to be answered in English or non-verbally
- Section B – questions in German, to be answered in German or non-verbally
- Section C – translation from German into English (a minimum of 35 words at Foundation Tier and 50 words at Higher Tier)



### What's assessed

Communicating effectively in writing for a variety of purposes

### How it's assessed

- Written exam: 1 hour (Foundation Tier), 1 hour 15 minutes (Higher Tier)
- 50 marks at Foundation Tier and 60 marks at Higher Tier
- 25% of GCSE

### Questions

#### Foundation Tier

- Question 1 – message (student produces four sentences in response to a photo) – 8 marks
- Question 2 – short passage (student writes a piece of continuous text in response to four brief bullet points, approximately 40 words in total) – 16 marks
- Question 3 – translation from English into German (minimum 35 words) – 10 marks
- Question 4 – structured writing task (student responds to four compulsory detailed bullet points, producing approximately 90 words in total) – there is a choice from two questions – 16 marks

#### Higher Tier

- Question 1 – structured writing task (student responds to four compulsory detailed bullet points, producing approximately 90 words in total) – there is a choice from two questions – 16 marks
- Question 2 – open-ended writing task (student responds to two compulsory detailed bullet points, producing approximately 150 words in total) – there is a choice from two questions – 32 marks
- Question 3 – translation from English into German (minimum 50 words) – 12 marks



## Year 10 content:

### German & French

**Autumn term:** Home and the Daily routine and Area you live in  
celebrations

**Spring term:** Austria and other Home and the area German speaking you  
live in countries

**Summer term:** Holidays

Year 10 content:

Please bear in mind, for revision purposes, we will not cover higher writing tasks or grammar content until year 11. We will cover some higher reading and listening in lessons, where appropriate.

## Revision Zone

In the Revision Zone folder for MFL there are lots of revision materials and some links to useful websites. We recommend using Seneca, Memrise, GCSEpod, Blooket and Quizlet to help with both vocabulary and phrases.

You can also access your Active Learn account that you have at school from home, this has all aspects of the course broken down into chapters. There are reading, listening and writing skills that you can practise on there.

If you would like to know anything else about the GCSE, please do not hesitate to ask either Ms Harveyson or Ms Carrington