



Alderman Peel High School

Alderman Peel High School
Market Lane, Wells-next-the-Sea
Norfolk, NR23 1RB

www.wensumtrust.org.uk/aldermanpeel

01328 710 476

office@aldermanpeel.norfolk.sch.uk

1 March 2020

Re: Year 11 Grades 2021

Dear Year 11 Students and Parents/Carers

As you may have seen in the media, the Secretary of State for Education has now described his intentions for the awarding of GCSE and Vocational qualifications for this summer.

On the following page, we have attached a useful infographic summarising the key details for GCSE qualifications.

There are still more details to follow, as we must now wait for each exam board to provide their own guidance in response to this government instruction. We hope to receive this before the end of the Spring term.

Similarly, we are told the arrangements for vocational qualifications – such as BTECs and Cambridge Nationals – will be the similar to that of GCSEs, but we await further clarification on this.

Until then, these are the key messages to be aware of at this time:

- **Grades will be awarded by the school, not by a ‘computer algorithm’.** APHS will need to establish a rigorous process to determine these grades based upon the exam board guidance.
- **Public examinations will not take place this summer, but school assessments can continue.** These will be shaped by materials provided by exam boards, along with their recommendations and requirements.
- **You will only be assessed on what you have been taught.** This should provide reassurance to you, however, this does not mean that we stop teaching new content now. We will continue to teach new material so that you have learned as much as possible to take with you to your next stage of education.
- **Results will be based on completed and future work, so keep doing your best.** As described above, it is important that we keep focused and motivated to complete work to the best of our abilities.
- **Non-exam assessment should continue and non-exam assessments can be used as evidence even if incomplete.** Your teachers will provide you with more guidance on this in due course.

This new set of arrangements provides all students with an opportunity to demonstrate/evidence to us that they can work at a higher level, but we will only be able to put forward grades we have evidence to support.

We have not yet been given details of when a ‘Year 11 leaving date’ will be. We will share all of this as soon as we know more.

Please be aware that GCSE results this summer will be released to students on **Thursday 12th August 2021**.

As we have throughout this time, we will keep you informed with all information and we are really looking forward to welcoming back Year 11 on **Monday 8th March 2021**.

Yours sincerely

Mr M Hardman
Vice Principal

We are part of...

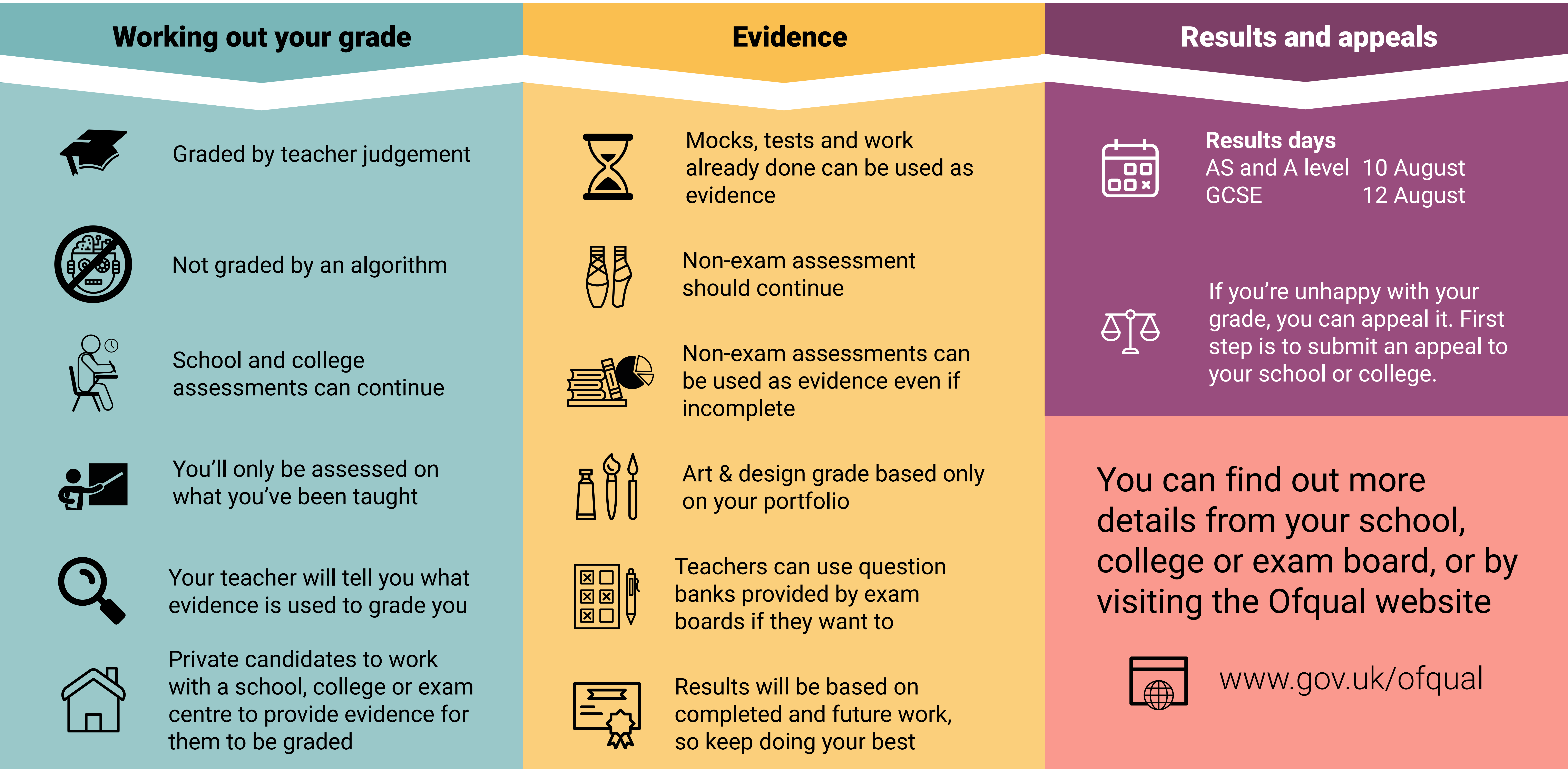
WENSUMTRUST

FOR CHILDREN, FAMILIES AND COMMUNITIES

How GCSEs, AS and A levels will be awarded in summer 2021



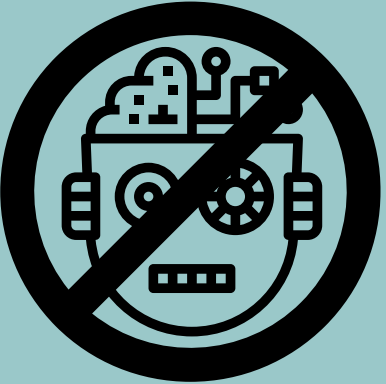
Ofqual/21/6751/2



Working out your grade



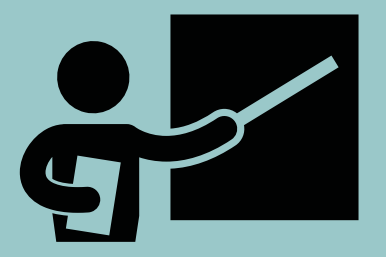
Graded by teacher judgement



Not graded by an algorithm



School and college assessments can continue



You'll only be assessed on what you've been taught



Your teacher will tell you what evidence is used to grade you



Private candidates to work with a school, college or exam centre to provide evidence for them to be graded

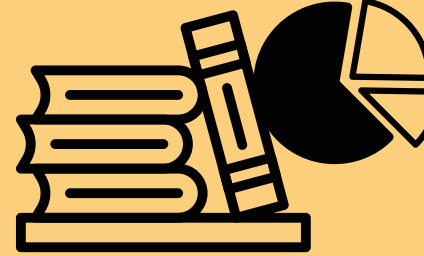
Evidence



Mocks, tests and work already done can be used as evidence



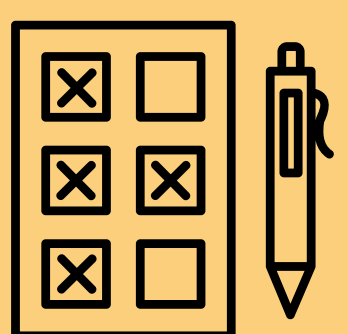
Non-exam assessment should continue



Non-exam assessments can be used as evidence even if incomplete



Art & design grade based only on your portfolio

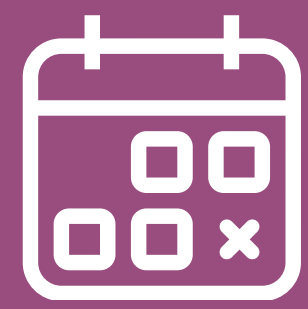


Teachers can use question banks provided by exam boards if they want to



Results will be based on completed and future work, so keep doing your best

Results and appeals



Results days
AS and A level 10 August
GCSE 12 August



If you're unhappy with your grade, you can appeal it. First step is to submit an appeal to your school or college.

You can find out more details from your school, college or exam board, or by visiting the Ofqual website



www.gov.uk/ofqual