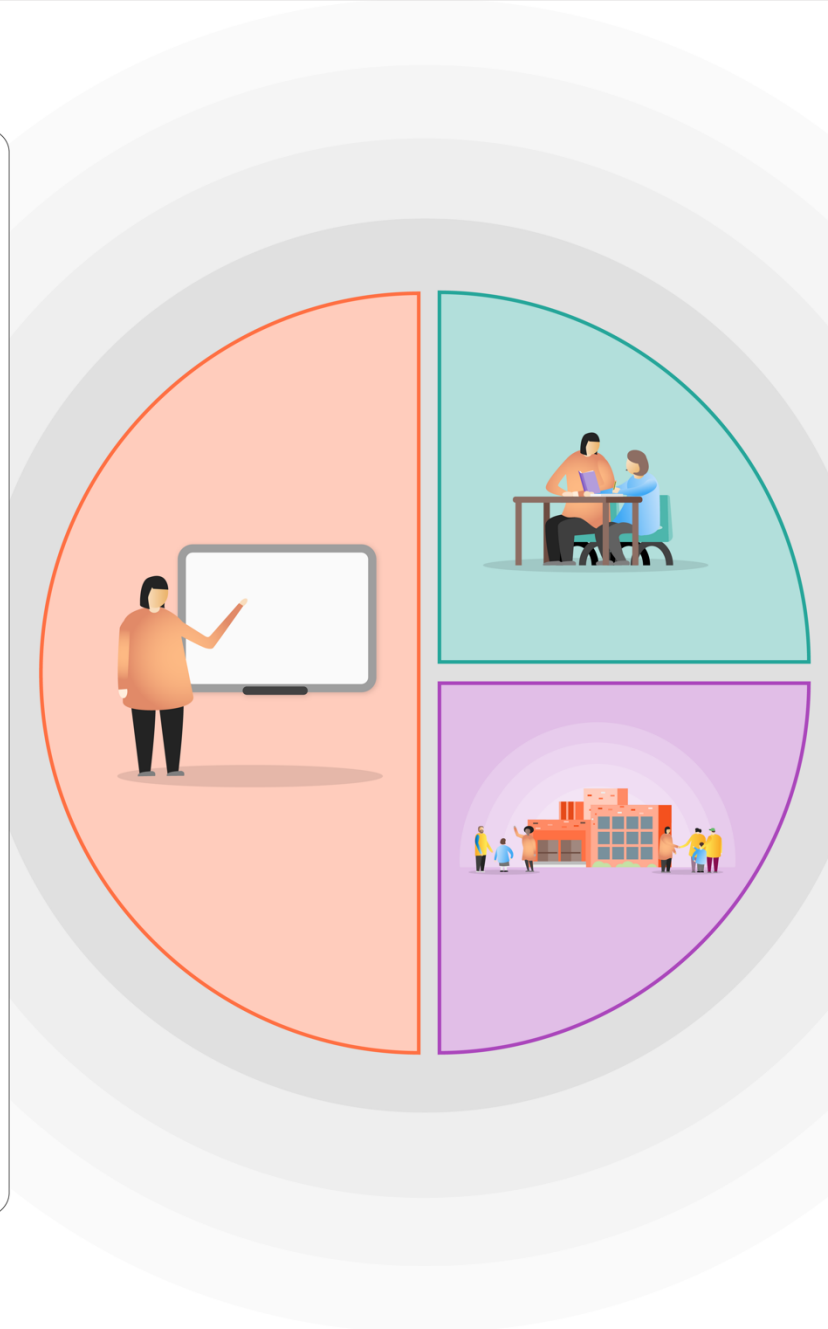


## 1 Teaching

- Quality first teaching supported by evidence based CPD.
- Development of metacognitive, memory and feedback strategies in the classroom.
- Whole school literacy approach with focus on vocabulary acquisition, and reading strategies.
- Monitoring of student progress through data tracking to inform responsive teaching, intervention, intelligent grouping and setting.
- Pupil Premium VIP strategy and PP25 representation within the classroom and across academy. (Reading, questioning, praise, parental contact, feedback and enrichment.)
- Developing cultural capital, through curriculum enrichment and careers opportunities.



## 2 Targeted academic support

- Diagnostic testing to inform Literacy and Numeracy intervention. Focus on gaps rather than groups.
- Recourses for academic support, revision material, and facilitated ICT access, and online resources.
- Peer Tutoring Programme – Targeted academic support through Maths leaders and Peer Readers.
- Academic Intervention for HAP students to inspire and Raise Aspiration, such as a Brilliant Club and PP Aspire 9

## 3 Wider strategies

- Emotion Coaching to seek to improve pupils' interaction with others and self-management of emotions, in order to support academic or cognitive elements of learning.
- Diagnostic tools to identify social and emotional barriers to learning and target support.
- Pastoral support packages through Engage, Reflection, ELSA's, Wellbeing Group, and attendance.
- PP25, and financial support for extracurricular clubs and trips to improve cultural capital and aspiration.