

4th July 2023

Dear Parent/Carer

Activities Day - Thursday 20th July 2023

Activities Day will take place on Thursday 20th July for years 7 to 10. The students have received a presentation in form time, therefore will have an understanding of what each activity has to offer and for which year groups. The activities include:

Trip	Year Group	Cost per student
Banham Zoo	7	£15.50
Pleasure wood Hills	7	£23.60
Inflatable Sports - In School	7	£10.50
Science and Natural History Museum	8	£25
A Play in a Day - In School	8	£5
Go Ape	9	£24
Coastal Walk	9	£5
Hautbois Hall	10	£41
Snow Sports and Sky dive	10	£57
Cinema	10	£10
County Cricket Match	Any	£42.50

Please indicate your child's activity choice by selecting and making the payment required for their chosen activity on Scopay. Please do not send cheques or cash into school. (This will not secure a place early)

The Activity Day choices to make a payment and secure a place will go live on Scopay on **Thursday 6th July at 4pm.**

If you find you have not previously set up a Scopay account for your child and you require a Scopay link code please email Mrs Webb our Office Manager finance@acle.norfolk.sch.uk
Please note you should access Scopay via the '£' sign on the school website to see a full list of activities available for your child. If an activity is fully booked it will no longer appear on Scopay as an option.

Students will need a packed lunch for all activities, unless stated otherwise. If your child is entitled to a Free School Meal and you would like to pre order a packed lunch- please fill in this form.

[Order a FSM here](#)

If your child is a Pupil Premium student and you would like to apply for a contribution please get in touch with Mrs Skarin - cskarin@acle.norfolk.sch.uk

All activities will take place within the school day with the exception of the Science and Natural History Museum Trip, Snow Sports and Sky Diving and the County Cricket Match. Further details of each trip are available in the accompanying information below.

Yours sincerely



Mr S Newstead
Vice Principal

We are part of...



FOR CHILDREN, FAMILIES AND COMMUNITIES

Below is some general information about each trip..

ALL YEARS - County Cricket Match at Chelmsford

Info - Day two of the County Championship match between Essex and Kent

Cost: £42.50

The cost includes a ticket to the game and a coach taking us there and back

We will leave school at: 8.30am

We will arrive back at: 8.30pm (approx)

Staff going on trip: Mr Hurren, Mr France and Miss Wacey

You will need to bring a packed lunch, water bottle, sensible footwear, hat and sunscreen. If you have a school lunch then we will make sure we give this before we leave.

You might want to bring a small amount of money for merchandise or to purchase food or ice cream at the ground.



Y7- Inflatable Games & Sports Festival Plus BBQ

Staff- Ms Legeno-Bell, Ms Burdett. Ms Harveyson and Ms Carrington

Cost - £10.50

Spaces Available: 50

Timings: Arrive at school by 8.45am. Come straight to the school field.

Activities: A range of inflatable games and sports will be set up on the school field, along with music and bubble machines. You will be able to have a go at them all! A BBQ will be provided for lunch.

What to bring: Wear old trainers and casual clothes that you don't mind getting wet and muddy. Bring a change of clothes in case it's raining as well as sun cream and a raincoat/umbrella.



We are part of...

WENSUM TRUST

FOR CHILDREN, FAMILIES AND COMMUNITIES

YEAR 7- Banham Zoo

Info - A lovely day out at the zoo, exploring and meeting 100's of amazing animals - with giraffes, tigers, leopards, meerkats, penguins and more

Cost: £15.50

The cost includes entry to the zoo and a coach taking us there and back

We will leave school at: 9.00am

We will arrive back at: 15.30pm

Staff going on trip: Ms Cunliffe, Ms Baxter, Ms Gibbs, Mr Field and Ms Kent

You will need to bring a packed lunch, water bottle, sensible footwear must be covered ie trainers, hat and sunscreen (if sunny). Free School Meal will be provided with a pack up before we go.

You might want to bring no more than £10 for an ice cream, drink or something little from the souvenir shop.



YEAR 7- Pleasurewood Hills.

Info - Trip to Pleasurewood Hills, Lowestoft, Suffolk, NR32 4TZ.

Cost: £23.60

The cost includes a ticket to the park and the coach travel.

We will leave school at: 9.15am

We will arrive back at: 3.00pm

Staff going on trip: Ms Bivar Segurado, Mrs Mackie, Miss Drosou, Mrs Kinnarney and Mr Scott

You will need to bring a packed lunch, water bottle, sensible footwear, and sun cream (if sunny). If you have a school lunch then we will make sure we give this before we leave.

You might want to bring a small amount of money for a ice cream or drink at the venue.



We are part of...

WENSUM TRUST

FOR CHILDREN, FAMILIES AND COMMUNITIES

YEAR 8 - *Science & Natural History museums, London*

Info - Trip to London to visit the Science Museum and then the Natural History Museum in London.

Cost: £25 each

We will leave school at: 6am

We will arrive back at: 7.30pm

Staff going on trip: Miss Frary, Mrs Swain, Mrs Thompson, Mrs Green, Miss King, Mr Carrier, Mr Frost, Mrs Mills.

You will need to bring a packed lunch. If you have a school lunch then we will make sure we give you this before we leave.

It would be good if you could bring a little bit of spending money as both museums have excellent shops with lots of cool things in them but if you are not able to, please do not worry.



YEAR 8 - A Play in a Day!

Info: Spend a day with nationally renowned playwright James Fritz.

Cost: £5.00

40 places

Timing: 9am - 3:30pm

Mrs Halls, Mrs Cullen, Mrs Barber and Miss Halpin would like to invite you to join in the fun. Spend a day enjoying drama activities with an industry professional.

Please wear comfortable black clothing and sensible shoes. Bring a packed lunch.



We are part of...

WENSUM TRUST

FOR CHILDREN, FAMILIES AND COMMUNITIES

Year 9- Coastal walk

Info - Take part in a beautiful coastal walk from Cley to Stiffkey- approximately 7 miles- 11K.

Cost- £5

Leave school at 9.00- Arrive back at 3.20pm

We will start at Cley Spy and walk to Blakeney where we will stop for a comfort break or ice cream. We will then walk to Morston where you can stop for a comfort break and the cafe. We will then walk to Stiffkey marshes where we will rest and have a picnic. Depending on the tide you can take part in crabbing or paddle in the river and marshes.

You will need: comfortable walking shoes, hat, suncream, water, a packed lunch (FSM school will provide packed lunch) and some money for an ice cream.

If you intend to go in the mud marshes and shallow river you will need to bring a towel and change of clothes- Mrs Watts will update on tidal information nearer the time to see if this is possible.



YEAR 9 - Go Ape

Info - Trip to Go Ape (Thetford Forest) to take part in the Treetop Adventure + course.

Cost - £24pp

Leave school at approx. 9am and arrive back to school by approx. 3:30pm

You'll need to bring a packed lunch (if you usually have a free meal from school, a packed lunch will be provided), a hat, sunscreen, plenty of water etc. Please make sure you wear appropriate activewear and trainers.

You may wish to bring a small amount of money for an ice cream or something similar.



We are part of...

WENSUM TRUST

FOR CHILDREN, FAMILIES AND COMMUNITIES

YEAR 10 - Cinema Trip

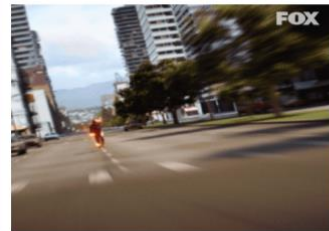
Info - Train / Bus Riverside Norwich
Screen Time Showing 12:00

Cost - Travel + Cinema ticket £10.

If you wish to purchase anything additional money will be needed. 55 Places

Leave Acle Academy approx. 09:45

Back to Acle Academy approx. 15:30



YEAR 10- Hautbois Activity Center



Info - We will take part in 3 activities; Kayaking, Paddle Boarding and abseiling. It does not matter if you are a complete beginner or have done it before, it caters for all abilities!

Cost: £41

The cost includes a ticket to the game and a coach taking us there and back

We will leave school at: 8.30am

We will arrive back at: 16.15pm (approx- please make sure you book in on late busses)

Staff going on trip: Ms Skarin, Ms McNulty, Mrs Andrews

You will need to bring a packed lunch, water bottle, sensible footwear must be covered ie trainers, hat and sunscreen (if sunny). Free School Meal will be provided with a pack up before we go.

You will need to make sure you bring a complete change of clothes including shoes, just in case....



We are part of...

WENSUM TRUST

FOR CHILDREN, FAMILIES AND COMMUNITIES

YR 10

A day of adrenaline filled action in Milton Keynes

Staff- Mr Southerden and Mr Orton

Cost - £57.00 - Includes all activities, equipment and minibuss transport

Spaces Available: 12

Timings: Leave @ 7am Return by 6.30pm

Indoor Skydiving

Full safety briefing and Physics of Flight Workshop

2 Flights Per Person

Digital Photo, Video & flight certificate for each flyer

Lunch Break

Students can either bring a packed lunch or make use of the fast food establishments in XScape

Adventure Golf

12 Holes of Crazy, Volcano themed golf. Can you beat the teachers?

Real Snow Skiing

1 & 1/2 hrs of intermediate+ lesson time with an instructor

Students must have previous skiing experience or have completed basic lessons at a dry ski slope (Snowplow)

Boot and Ski Hire Included



Clothing
Comfortable sportswear for skydiving
Warm clothing for skiing
GLOVES are Essential



We are part of...

WENSUM TRUST

FOR CHILDREN, FAMILIES AND COMMUNITIES