



## Newsletter – 16<sup>th</sup> February 2024

### RSC First Encounters 'Romeo and Juliet'

We were absolutely thrilled to host the Royal Shakespeare Company who worked with our students and staff to perform 'Romeo and Juliet' on the 14th February. Our Year 10 and 11 students were able to watch the performance which has greatly aided their understanding of the play and will support their English Literature exam. The company later performed for the Acle community in an evening performance. Our students will join the RSC for a final performance in the Playhouse Theatre in Norwich on Saturday.

We were spellbound by the quality of the performance and particularly thrilled with the calibre of performance from our students who found working with RSC an inspiring experience. We would like to thank Mr Frost and Mrs Barber for their amazing work on creating this opportunity for our students and school community.



We are part of...

**WENSUM**TRUST

## Inappropriate length skirts

Unfortunately we are having to remind a number of students about the appropriate length of school skirts. Persistent concerns have been raised about the length of skirts with many students choosing to wear their school skirt as a mini skirt or micro mini skirt. We have reminded students through form time about the importance of appropriate professional dress and societal expectations in professional places of work.

We appreciate that some girls may leave home wearing their skirt at an appropriate length and then may choose to roll their skirt up when they get to school. We understand that teenagers are constantly growing and grow at different rates. We allow a degree of flexibility and understand that skirt lengths may vary depending on your daughter's height. Skirts should be worn close to or above the knee with a maximum range of **10cm from hemline to knee**. Our bottom line is that **skirts must cover lower thighs**.

A student wearing a skirt that is too short will incur behaviour points and may face longer sanctions for repeated incidents. We will be enforcing our uniform policy with more rigour after February half term and have encouraged students who have outgrown their current skirt to source an alternative. Repeated failure to wear an appropriate skirt will result in a student being directed to wear trousers.

Our PTA has many skirts in the pre loved uniform shop that can be purchased at £4, please visit <https://acle-academy-parent-teacher-association.sumupstore.com/products>

If you need any help in sourcing an alternative skirt please contact your child's Head of Year.



## Teaching & Learning Working Group

On Wednesday, 14<sup>th</sup> February our staff Teaching and Learning group had the invaluable opportunity to collaborate once again with renowned expert, author and former school leader, Graham Powell. Throughout the day, we delved into strategies to deepen the integration of our PRIDE learning framework into our daily lessons. Exploring the fundamental principles that underpin our teaching and learning philosophy, we gained fresh insights and practical approaches to enhance student engagement and achievement. The knowledge and strategies gleaned from our session with Graham Powell will be disseminated and shared with our wider staff at the upcoming Inset day event in late March, ensuring a cohesive and impactful approach to education across our school community.



## *Physical Education*

This half term, we have had some great success, particularly in football, including a 12-1 win against Hewitt Academy in the community cup for our year 7 boys and a 4-1 win against Framlingham Earl in the NSFA plate competition for our year 8 boys.

In rugby, the year 10 boys made it to the quarter finals of the plate competition, narrowly losing in the last few minutes against a very strong Reepham side.

Well done to the following students who were selected to run in the county qualifiers for cross country due to their brilliant run at Thorpe St Andrew School: Riley D and Ollie S in year 7 and Sonny B and Elliot S in year 8.

We say goodbye to the coaches from North Walsham rugby club this week who have been with us since November for PE lessons and some additional GCSE and Sport Studies sessions. We have really appreciated learning from their expertise and look forward to applying our skills in the remaining rugby competitions we have this year.

Congratulations to all students who won player of the match over the last few weeks:

### **Year 7**

Tyler-Jay B - football

Toby C - football

Beth J - football

### **Year 8**

Sonny B - football

### **Year 9**

Oscar A - rugby

Connie G - football

### **Year 10**

Reuben M - rugby

Ellie-Mae L - football

## Year 11 GCSE Art trip

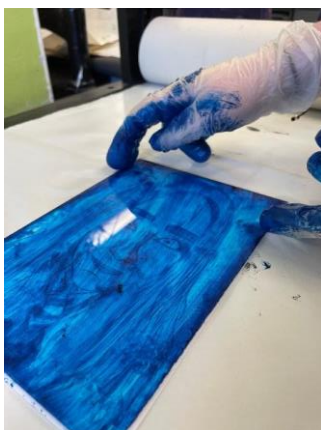
The year 11 art GCSE group had a great exam research trip to Norwich Castle Museum & Art Gallery. This was an ideal chance for the students to see the museum collection and the 'Norwich Works' photography exhibition. We also had our own talk from one of the museum staff too, which gave us all a good insight into the collection and exhibition. The students created a number of sketches as we worked our way around the galleries for their forthcoming art exam in mid-April.

Well done everyone for making this such a lovely trip!



## Year 10 Art GCSE

Last week the year 10 GCSE group were experimenting with etching and printmaking. This was the first time for many of the pupils using this process, they had some great results! The prints were from a photograph each pupil had chosen of themselves for the current project 'identity.' These prints and this process will now form part of their GCSE art coursework.





## Lovell Apprenticeship Day 2024

On 8th February, some of our Year 9 and 10 students enjoyed carpentry and bricklaying workshops put on by Lovell as part of the Wensum Trust Partnership. Year 9 students who had expressed an interest in the Construction Tech Award in the recent options survey were invited whilst the current Year 10 cohort had their first experience of bricklaying. It was brilliant to see Alfie Tate and Alfie Walker, two former students, excelling within their sponsored Lovell Apprenticeships and offering advice, support and inspiration to current Acle Academy students.

Thank you to the Lovell team for the fantastic opportunity and a special mention to EDN Kitchen Installations & Carpentry Services who kindly donated ten panel saws to the Creative Industries faculty.



Please find more photographs from the day via the link below

[Lovell Apprenticeship Day 2024](#)



## Safer Internet Day Message from Norfolk Constabulary

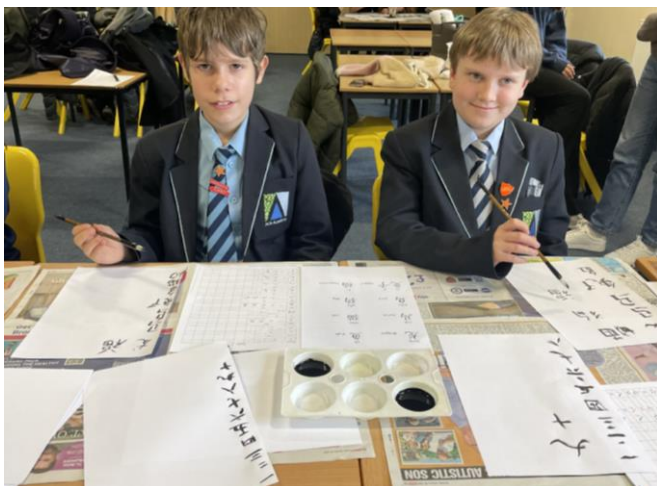
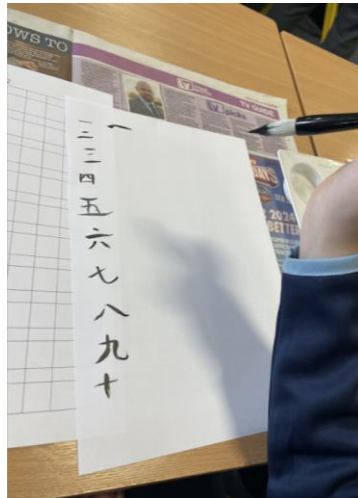
Please use the link below

[Safer Internet Day Message](#)

## East Norfolk Sixth Form- Chinese New Year Celebration

Last week, 30 year 7's had an opportunity to go and visit East Norfolk Sixth Form to celebrate Chinese New Year. We had lots of fun, the students learnt to count to 100! They took part in a quiz learning some interesting facts about Chinese New Year, and learnt about the most common Chinese symbols in their alphabet! To finish the session off they all had a go at trying to write the Chinese symbols using proper Chinese calligraphy pens and the proper way to hold them so the ink will not smudge! All students were a delight to have on the trip!

- Mrs Skarin



## Jacob Minns Year 10

I ride for a clothing brand called 'Heath Crew'. I also ride for 'SYEP' Sprowston Youth Engagement Project. I race and do trick competitions, in my last race I came 6th out of 50 and 29th out of 264, and this event included a number of professional athletes. I am lucky enough to have my bike park trips paid for by my sponsors. Some people think I'm going to really hurt myself on the bike, and yes, I do but it doesn't stop me. It has taken five years to get where I am and it's scary but once you've done it it's easy. Mountain biking is hard.



## ONLINE BOOKING NOW OPEN FOR PARENT CARERS

**family voice**  
norfolk  
*together improving services*

**Annual Conference**  
**Saturday 23<sup>rd</sup> March 2024**

John Innes Centre, Norwich NR4 7UH



Find out about all things SEND

- Keynote presentation
- Information stands
- Workshops
- The chance to chat with professionals



Please visit [www.familyvoice.org.uk](http://www.familyvoice.org.uk)  
or scan here to register your attendance:

**Closing date for registration: 8th March 2024**







**Please follow the link below to information about the 5-19 year old Healthy Child Programme, which has a section about attendance and useful resources**

<https://www.justonenorfolk.nhs.uk/attendance>



**The latest Rewards & Achievements News can be found [Here](#)**



## **Learner of the Month**

Congratulations to our winner this month, Charlie H for creative writing in English, his writing shows great maturity and control and is highly sophisticated. Well done Charlie! Laylah M is our January Learner of the Month nominee for her imaginative and engaging creative writing depicting a Courtroom- fantastic work Laylah!





## PLACES WHERE KIDS EAT FREE (OR FOR £1) DURING FEBRUARY HALF TERM 2024

[moneysavingcentral.co.uk/kids-eat-free](https://moneysavingcentral.co.uk/kids-eat-free)



### ASDA

Kids eat for £1 All Day, Every Day at Asda cafes, with no adult spend required.

### TESCO

Kids eat free with a purchase of 60p+ from  
From Mon 12th - Fri 23rd February 2024

### SAINSBURYS CAFES

Kids eat for £1 with the purchase of an adult hot main. From 11:30am every day.

### BEEFEATER & BREWERS FAYRE

Two children under 16 can get a free breakfast every day with one paying adult!

### THE REAL GREEK

Kids under 12 eat FREE every Sunday for every £10 spent by an adult

### GREENE KING PUBS

Kids Eat Free all-day with the purchase of an adult's meal. Deal, Monday-Friday, between Mon 12th - Friday 23rd February 2024

### TRAVELODGE & PREMIER INN

Buy 1 Adult Breakfast from just £8.99 & up to two kids eat breakfast for free

### SIZZLING PUBS

Every Monday to Friday, 3 - 7pm, kids' mains are £1 with every adult meal.

### TGI FRIDAYS

Kids Eat Free When 'Stripes Rewards Members' purchase a full priced adult's main meal (App needed)

### IKEA

Kids get a meal from 95p daily from 11am

### MORRISONS

Spend £4.49 and get one free kids meal all day, every day.

### GORDON RAMSEY RESTAURANTS

Kids under 8 eat FREE all day, every day at selected Gordon Ramsay restaurants

### PRETO

Kids up to age 10 eat free all day, every day with paying adults at Preto in Half Terms

### YO! SUSHI

From Mon 12th - Fri 23rd February 2024  
kids eat free with every £10 adult spend

### BELLA ITALIA

Children eat for £1 with any adult main.  
The offer is valid 4-6pm Mon to Thurs.

### WHITBREAD INNS

Two kids under 16 eat for FREE with every adult breakfast purchased

### DOBBIES GARDEN CENTRES

At Dobbies, for every adult breakfast or lunch purchase, kids eat for FREE. Every Day!

### TABLE TABLE

Two children under 16 can get a free breakfast every day with one paying adult!

### PAUSA CAFE @ DUNELM

Kids get 1 mini main, 2 snacks & a drink FREE with every £4 spend after 3pm

### HUNGRY HORSE

Kids eat for £1 on Mondays

### FUTURE INNS

Under 5s eat for free with any adult meal.

## Open Heart Week Activities & Events- 12<sup>th</sup> – 16<sup>th</sup> February

This week we've been raising awareness of congenital heart disease with a range of activities and events.

Mrs McNulty has leading assemblies on heart disease looking at the causes and prevention. In Science lessons, students across all year groups have learnt about the functions of the heart. In form time, students had the opportunity to learn CPR. In PE lessons, students took part in a healthy heart relay competition. Selected students took part in a STEM focused activity involving a dissection of a heart.

In addition, students also took part in a number of creative opportunities themed around hearts including Art activities and Valentine's poetry in English. We were incredibly fortunate to be able to host the RSC who performed 'Romeo and Juliet' and students in years 10 and 11 had the opportunity to watch the performance which will aid their GCSE preparation.

We've held charity events including a heart sweet sale, bake, doughnut sale and a non-uniform day today. All money raised will go towards Great Ormond Street Hospital which specialises in children's care. To donate, please use the link below:

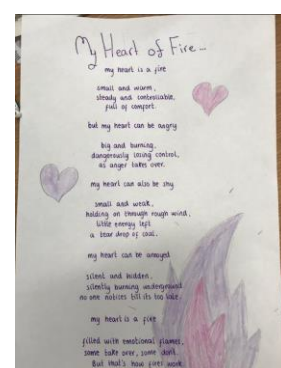
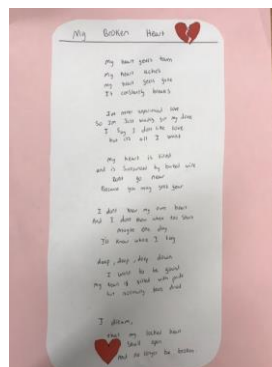
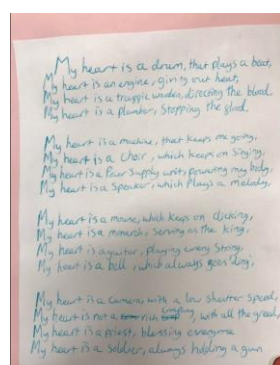
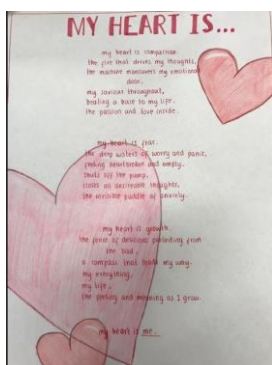
<https://www.justgiving.com/page/acleacademygosh2024>

We are very proud of our school community for celebrating this charity event and raising awareness of the importance of healthy hearts. More information about the Congenital Heart disease can be found through this link;

<https://www.bhf.org.uk/informationsupport/conditions/congenital-heart-disease>  
or Great Ormond Street Hospital Charity can be found via <https://www.gosh.org/>



[Photographs from this week's events can be found here!](#)





## **Norse Catering Spring/Summer 2024 Menu**

Please find below a link to the new menu choices available after half term.

[Norse Spring/Summer 2024 Menu](#)



[\*\*https://www.activenorfolk.org/public/bignorfolkholidayfun/\*\*](https://www.activenorfolk.org/public/bignorfolkholidayfun/)

**The next programme will take place over the Easter holidays between 2nd – 12th April 2024. Further details will be announced closer to the time.**

The Big Norfolk Holiday Fun (BNHF) activity programme is run in partnership with Norfolk County Council, and provides holiday activities for children and young people aged 4 -16 in Norfolk.

These activities include multi-sports, dance, theatre, arts and crafts, and much more!

Children eligible for benefits-related free school meals can claim free spaces on the activities, whilst paid spots are available on many activities for those who don't. [\*\*Find out more about this in our FAQ section.\*\*](#)

[\*\*FAQ's Here!\*\*](#)





**Please follow the link below  
to the Year 11 PPE Round 2  
(Pre-Public Examinations)  
Timetable February - March  
2024**

[PPE Timetable Feb-March 2024](#)

## **Safe Parking**



Please may we remind parents **not** to park on the single yellow lines outside the school during drop off and pick up times, come into the school grounds during these busy times or park in the school lay by.

We have lots of buses and taxis that need to come into the school grounds and additional cars pose safety issues. Please can we urge all parents who collect their children to use the vast parking spaces available behind the Methodist Church. This is only a short distance from the school and will allow children to walk safely to and from school. Additionally, parents may choose to park on Mill Lane behind the school and children can exit via the back field.

## **We are recruiting!**

We currently have the following vacancies in our team:

- Instructor of Boys' Physical Education
- Invigilators



If you would like to find out more details about any of these posts, please see our website or contact the school for an informal chat.

[Find Current Vacancies here](#)



## Shipping Update.

With recent and ongoing developments in the Red Sea area which are impacting the shipment of certain goods, we wanted to update you with regard how we are managing this situation. The duration of this disruption is uncertain, but we are actively monitoring the situation with our suppliers and freight forwarders.

In order to manage any potential delays as best as possible, we are expediting the scheduled delivery of goods into our business to mitigate any impact on the delivery of main seasonal orders later in the year and for the upcoming back-to-school season. We will keep you informed of any confirmed delays.

As demand typically increases in the weeks ahead of Summer Term, we encourage parents to place orders as early as possible particularly for any summer items. If you have any questions or concerns, please do not hesitate to reach out to us at any time. We appreciate your understanding during these challenging circumstances.

## Future.





Our online preloved uniform shop includes school uniform and sportswear and is accessed via our SumUp Shop by following this link:

<http://acle-academy-parent-teacher-association.sumupstore.com>

Items can be paid for online with suggested donations per item. The item can then be collected at a prearranged time with the PTA. If you have any uniform donations please drop these off to the school office.

**If you would like to join the PTA please contact them by email**

[pta@acle.norfolk.sch.uk](mailto:pta@acle.norfolk.sch.uk)



### **Please remember to check ClassCharts**

ClassCharts is our main form of communication to keep up to date with daily progress, updates and messages. ClassCharts is used to communicate pride points, behaviour points and interventions. We also use this platform for parent announcements. As part of the home school agreement we ask parents to check this regularly, at least on a weekly basis. If your child has lost their log in, please ask their form tutor or the school office who will be able to provide child and parent login details. Parents and students can view a child's timetable via ClassCharts.

**Scan the QR code to visit our website and follow us on Facebook and Instagram**



**Follow us!**



# ACLE WINTER BEER FESTIVAL

COME AND JOIN US AT OUR  
4<sup>TH</sup> WINTER BEER FESTIVAL  
RAISING FUNDS FOR LOCAL  
CHARITIES/GROUPS

REAL ALES, CIDER, SNACKS,  
HOT FOOD, AND OTHER  
DRINKS AVAILABLE.

FOLLOW US ON:



FREE ADMISSION  
FRIDAY MIDDAY - 11PM  
SATURDAY MIDDAY - 11PM  
SUNDAY MIDDAY - 6PM

NEW VENUE - ACLE  
ACADEMY, SOUTH  
WALSHAM ROAD, NR13 3ER

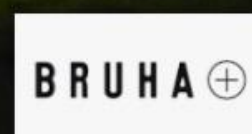
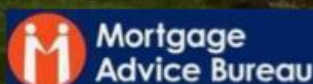
X1 BUS ROUTE AND TRAIN STATION  
(10 MIN WALK) PARKING ON SITE.



**Ovamill Ltd**

WE ARE EXTREMELY GRATEFUL  
TO OUR MAIN EVENT  
SPONSOR OVAMILL LTD FOR  
SUPPORTING US AGAIN

**23<sup>rd</sup> to 25<sup>th</sup>  
February 2024**





**Useful Resources/Activities & links can be found [Here](#)**



**More Acle Academy News can be found [Here](#)**



### Contact details

The majority of our communication is electronic so it is really important that we maintain accurate records of parental contacts. If you change your email address or phone number, please inform the school office so we can ensure you receive important information.

### Dates for your diary

Friday 16<sup>th</sup> February – School closes for half term break @ 3.30pm

Monday 26<sup>th</sup> February – School reopens after the half term break (Week 2 timetable)

Monday 26<sup>th</sup> February - Year 11 Round 2 of PPE (Mocks) exams begin

Thursday 7<sup>th</sup> March – Year 8 Engagement Evening 6pm-7.30pm

Thursday 14<sup>th</sup> March – Year 8 Parents' Evening 4.30-7.30pm

Tuesday 19<sup>th</sup> March – Parent Workshop 6 – 7pm.

Wednesday 27<sup>th</sup> March – school closes for the Easter break.



**Our Rural Hub Term Dates can be found [Here](#)**

**Our School Calendar can be found [Here](#)**