

## KNOWLEDGE ORGANISER

**Subject:** Art

**Group:** Year 9 (Autumn Term)

**Project:** Graffiti Lettering

### Key Vocabulary...

**Tone** - How light or dark something is. This could be parts of a pencil drawing, but can also refer to different darkneses of colours such as light and dark blue.

**Full range of tones** - Using everything from the darkest greys/black right through to white. Using the full range of tones within tonal drawings helps them appear stronger and more 3D.

**3D (Three dimensional)** - A drawing that looks 3D will feel as though the subject is solid and has depth as well as height and width

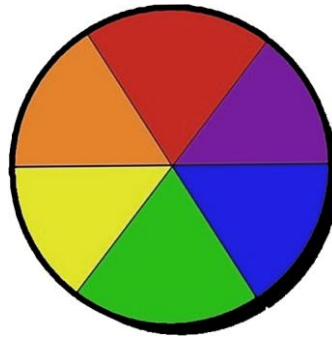
**Graffiti** - Writing or drawings scribbled, scratched, or sprayed on a wall or other surface in a public place.

**Distortion** - Changing the size and shape of something.

**Overlapping** - Having parts of a drawing look as though they go over the top of, or underneath, other parts.

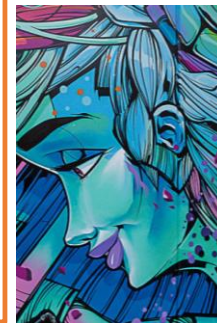
**Blending** - Gradually changing from one tone or colour to another without sudden 'jumps'.

**Refining** - Improving your skills or the quality of your designs/ideas through practise.



### Sofles...

Russell Fenn (AKA Sofles) is an Australian **street artist** born in Brisbane. Known for his **large-scale murals**, Sofles is one of the most skilled spray paint artists in the world.



### Colour Theory...

The colours next to each other going around the **colour wheel** are closely related and will blend together most easily. For example, Red and Orange, Yellow and Green, Green and Blue etc. We call these **harmonious colours**.

Colours opposite each other don't blend well as they are not closely related. We call these **complementary colours**.

### Weight of Line...

The **weight** of a line is determined by its **thickness**. Using different weights of line creates **variation** and **contrast**, making drawings more visually interesting. Different thickness of lines also help **emphasise** certain parts of a drawings more than others. They can also be used to suggest areas of **shadow** even in a **line drawing**.



### Links to videos shown in class...

Sofles' YouTube channel - [www.youtube.com/@SOFLES](http://www.youtube.com/@SOFLES)

Drawing a Letter 'B' - [www.youtube.com/watch?v=0BNPVhWX6sI](http://www.youtube.com/watch?v=0BNPVhWX6sI)

Blackbook Flip-Through - [www.youtube.com/watch?v=77EPn8H9u2A](http://www.youtube.com/watch?v=77EPn8H9u2A)

### Links to other relevant videos...

Graffiti Letter Structure - [www.youtube.com/watch?v=B0sp99KRhQA](http://www.youtube.com/watch?v=B0sp99KRhQA)

Drawing a Graffiti 'Piece' - [www.youtube.com/watch?v=xWkEwsTBtW8](http://www.youtube.com/watch?v=xWkEwsTBtW8)

10 Types of Graffiti - [www.youtube.com/watch?v=LANBe-FJlkY](http://www.youtube.com/watch?v=LANBe-FJlkY)