

10 February (Week 1)

**HEAD OF HOUSE ASSEMBLY:** **KS3:** Safer Internet Day

**YEAR 11:** Ambition

**THEME OF THE WEEK:** "Are online scams always too good to be true?"

**THIS WEEK'S QUIZ:** Attached in PPT Format

**HOUSE CHALLENGE:** Most number Honesty Marks.



**WE ARE READING:**

Year 7	Year 8	Year 9	Year 10	Year 11
George's Marvellous Medicine	Holes	Northern Lights	The Hate U Give	I Must Betray You

**MESSAGE FROM..... MISS MASON, ASSISTANT PRINCIPAL**

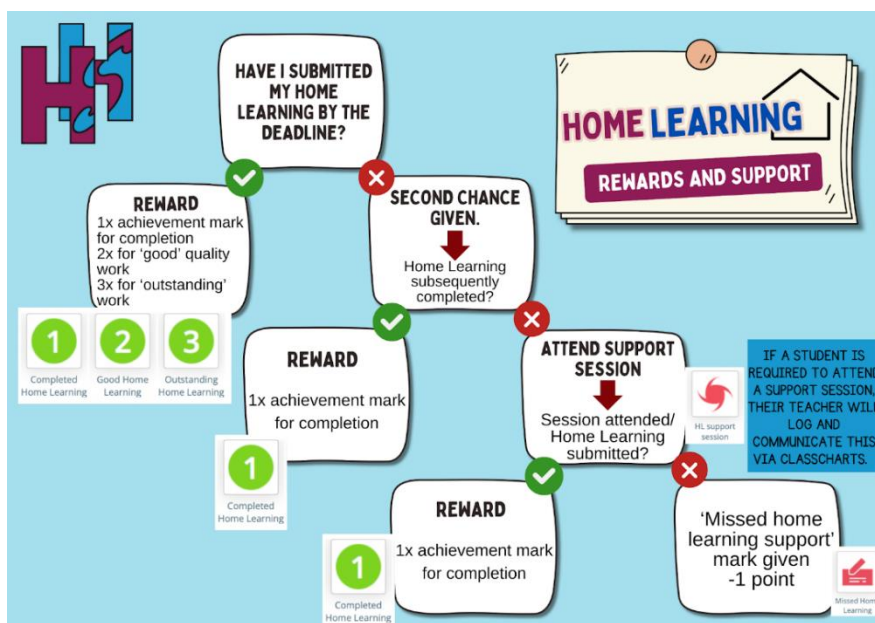


**Rewards shop success**

The rewards shop has been open since the start of December, and we have had over 1,000 sales in that time! It has been fantastic to see you using your well-earned points to purchase small rewards or to save them up for our higher-cost items and events. We will continue to update and vary the stock in the shop and let you know what is coming. Some items are very popular and sell out quickly. We will do our best to restock these items regularly to give more students the chance to buy them.

**Home Learning rewards and sanctions**

Home learning serves as a bridge between school and home, reinforcing concepts taught in the classroom. We celebrate your effort and dedication by rewarding this effort with achievement marks. To provide greater clarity with our home learning system, we have created a flowchart illustrating the different stages. If you are assigned a home learning support session, your teacher will log this on class charts, and a reminder will be visible so that you can be reminded to attend.



## DATES TO REMEMBER

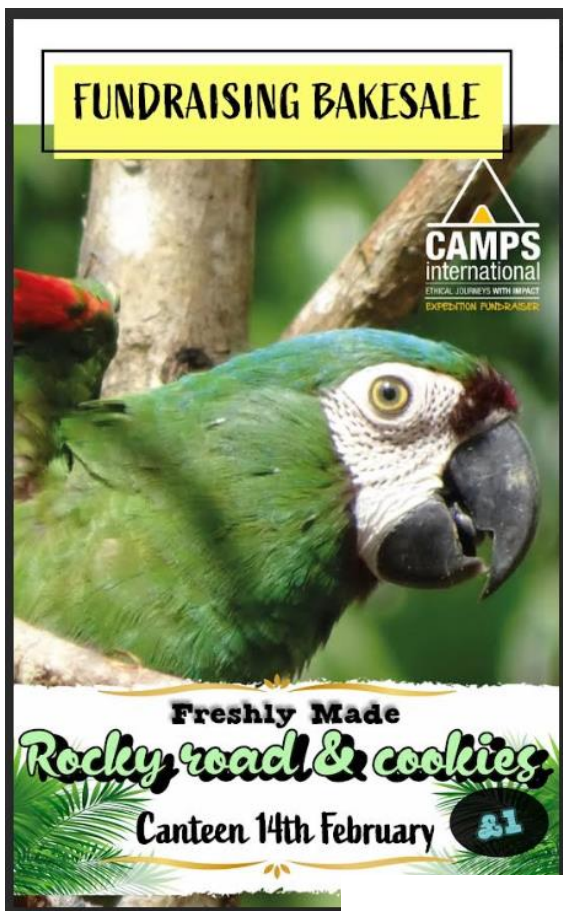
14 February – Fundraising Bake Sale, Canteen (see poster below)

17 February – 21 February – HALF TERM

## HOT CHOCOLATE WITH THE PRINCIPAL



Mr Earl met with a great group of students on Friday, 31 January go to our [News Story](#) to read more.



## PE LUNCH TIME HOUSE CHALLENGE



## TARGET GOLF CHALLENGE

When: Wednesday 26<sup>th</sup> February 2025

Where: Sports-hall

Who: All years and abilities welcome

What's happening? – Earn some points for your house! How many successful times can you chip the ball into one of the 3 hoops



## PE LUNCH TIME HOUSE CHALLENGE



## FOOTBALL CROSSBAR CHALLENGE

When: Wednesday 12<sup>th</sup> February 2025

Where: Astro

Who: All years and abilities welcome



What's happening? – Earn some points for your house! How many successful times can you hit the crossbar?



## HOUSE EVENT (9) WINNER



CONGRATULATIONS... **SNOWDON**

NEXT CHALLENGE!! – “The most number of inquisitive marks”



# TUTOR BULLETIN



AMBITION | RESILIENCE | KINDNESS | HONESTY | INTEGRITY

This week's attendance is the Year-to-Date Attendance from last week!

## STUDENTS WITH 0-10% REMOVED

Everest	Fuji	Nevis	Olympus	Snowdon
🏆 7BY: 99.1% 🏆	7DO: 92.8%	🏆 7DAV: 98.2%	7FRK: 86.5%	7BE: 90.7%
7EW: 96%	7FUL: 93.1%	7GDN: 95.8%	🏆 7PS: 97.9%	🏆 7CU: 98.2%
8BWN: 92.6%	8RNS: 87.8%	8GD: 93%	8SH: 93.8%	8DA: 92.2%
8RDR: 94.5% 🏆	8SC: 90.8%	8ROG: 86.9%	8HRN: 90%	8NKS: 91.8%
9BK: 94.7%	9HIL: 92.8%	9DV: 95.2% 🏆	9BAR: 88.2%	9HA: 92.7%
9BRK: 93.6%	9WES: 93.8%	9HV: 94.3%	9KA: 91.5%	9PO: 94.5%
10RE: 95.2%	10TMA: 92%	10ESC: 94.5%	10EPI: 92.1%	10TH: 92.2%
10TM: 90.9%	🏆 10HFM: 96.5% 🏆	10MA: 89%	10THM: 90.8%	10WY: 81%
11TAB: 91.3%	11BNG: 90%	11HWD: 92.3%	11LE: 88.7%	11LG: 86.1%
11RD: 92.9%	11HVY: 93.8% 🏆	11CAM: 91.2%	11GL: 86.5%	11MTL: 90.8%

🏆 = Best in Year

🏆 = Best in House

Every Day Counts

High attendance makes you twice as likely to pass your English and Maths GCSEs.