

Notice of plans to create a new two class Specialist Resource Base (SRB) at Acle Academy

Dear Parents and Neighbours,

As part of Norfolk County Council's commitment to invest in Special Education Needs across the county, we are proposing to build a Specialist Resource Base (SRB) equipped for children with Autism Spectrum Disorder (ASD) at Acle Academy. The SRB will cater for 16 secondary aged children in two classes.

A design team from Munnings Construction have been working closely with Children's Services and Norse Consulting on possible solutions and we are close to agreeing a final design. Munnings Construction anticipate submitting a planning application at the end of March/beginning of April, and before doing so we would like to share the proposal with parents and local residents.

Children's Services will be holding an informal exhibition event on Monday 10th March 2025 at Acle Academy, between 4pm and 5.30pm. This is an open, drop in, event and no booking is necessary.

Representatives from Munnings Construction, Norse Consulting, Children's Services and the school will be available to answer any questions you may have about the proposals. The outline proposals are attached overleaf.

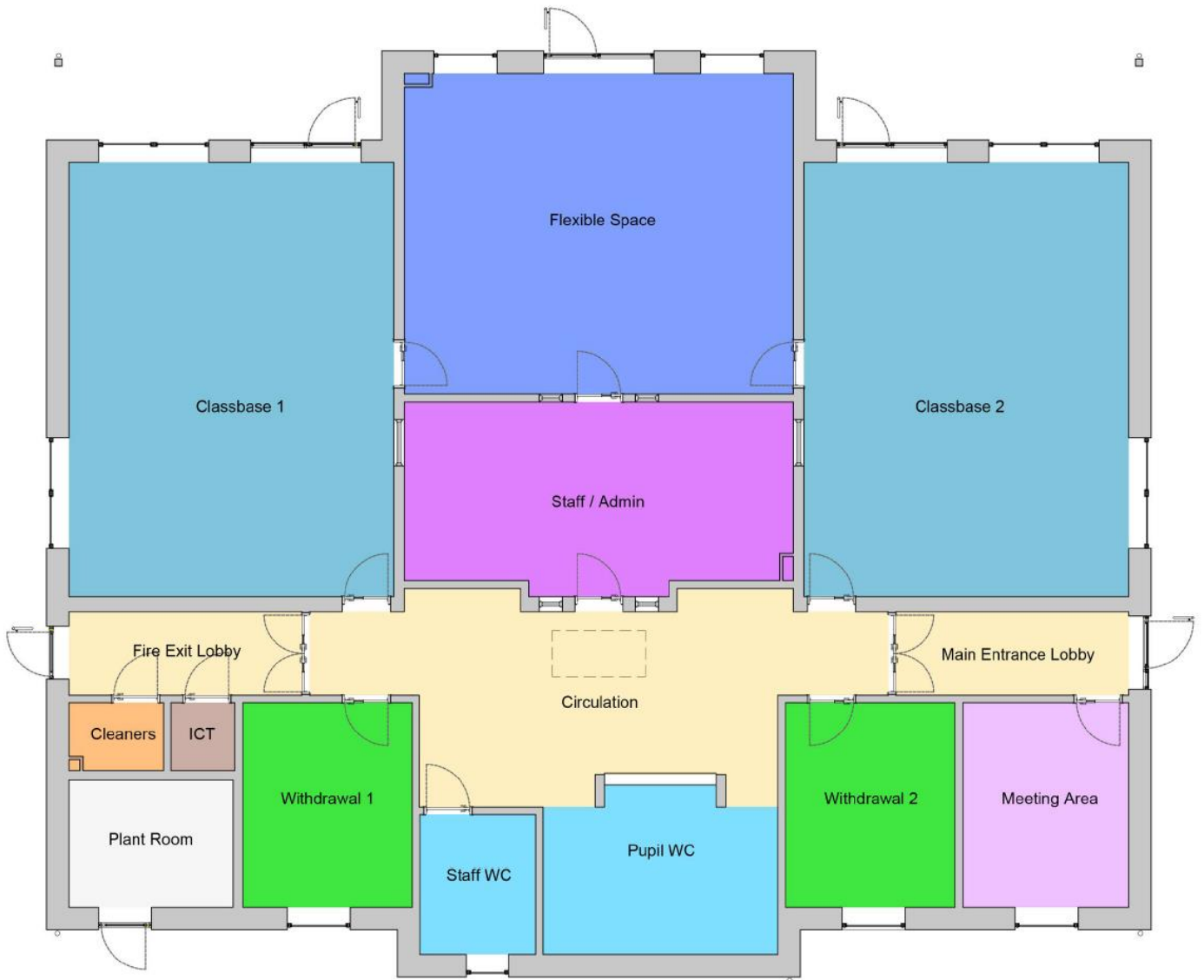
Once the planning application has been submitted there will be the opportunity for individuals and interested parties to express their views to the planning authority as a formal submission. If approved, it is hoped work will start in September 2025, and have a build duration of approximately seven months.

Please be aware that these plans and dates are provisional and are subject to change. Please check the Norfolk County Council Planning website once the application has been submitted for up-to-date information.

If you would like to discuss any of the above or have any queries regarding the proposals please contact Jamie Tolman, Children's Services Project Officer by email on schoolreview@norfolk.gov.uk

If you need this document in large print, audio, Braille, alternative format or in a different language please contact Customer Services 0344 800 8020 or 18001 0344 800 8011 (textphone) and we will do our best to help.

Building Plan



Proposed Site Plan

