

**23 January 2026**

[w/c 26 January – Week: 1](#)



## MESSAGE FROM..... MISS MASON, ASSISTANT PRINCIPAL

Across the school, our current literacy focus in lessons is on strengthening students' vocabulary acquisition through the SEEC method. (Select, Explain, Explore, Consolidate), ensuring that new words are explicitly taught, revisited and applied meaningfully across subjects. Departments have also been mapping key vocabulary within their schemes of learning so that the most important subject-specific words are clearly identified and prioritised in lessons. Alongside this, staff are carefully considering the readability of texts used in class, matching them appropriately to students' reading ages while still providing appropriate challenge and support, so that all learners can access subject content with confidence.

Reading is fundamental to accessing all areas of the curriculum; strong reading strategies and a secure vocabulary enable students to understand exam questions, follow instructions, engage with complex subject texts and develop deeper knowledge. By prioritising reading and vocabulary development, we are supporting students to become more independent, confident learners across every subject area.

### THEME AND WORD OF THE WEEK

for week commencing 26 January

**THEME – “Should there be a social media ban for under-16’s?”**

**WORD – Function**

## DATES FOR YOUR DIARY

**28, 29, 30 January** – The Wedding Singer the Musical School Production, 7.00pm (Main Hall)

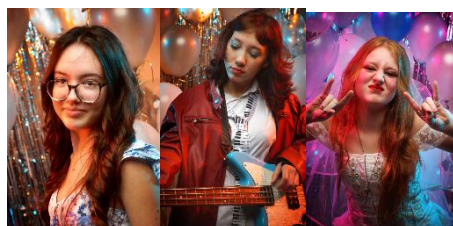
**29 January** - Year 8 HPV Vaccinations, 9.00am – 3.00pm (G4)

**3 February** - Year 9 Parents' Evening, 4.00pm – 7.00pm

## GENERAL NEWS/STORIES

**Parent/Carer Reminder: Contact Details** - If you have any change to your contact details **ie. home address, email or telephone number**, please contact the school via email [info@hellesdon.net](mailto:info@hellesdon.net) to ensure your child's records are up to date, this is very important and a safeguarding issue if your details are incorrect on our records.

**The Wedding Singer the Musical School Production** – if you have not booked your ticket and would like to come and see our show, please see the poster with the details or click the [Link](#).



## ATTENDANCE

We will be posting attendance information on our Facebook and Instagram pages each week with interesting statistics and helpful tips for parents/carers.

If you need support with your child's attendance, please email [attendance@hellesdon.net](mailto:attendance@hellesdon.net).


## PE FIXTURES & EVENTS

# Every Day Matters

Every day in school counts.


Even small differences in attendance make a BIG difference to learning.


Let's give every child their best chance.






## PE FIXTURE RESULTS

w/c 19<sup>th</sup> January 2026

**TUESDAY 20<sup>th</sup> JANUARY 2026**  
 Norfolk Schools Cross Country Championships @ Wymondham College  
*[Best Performances: E.Barnes = 8<sup>th</sup>, F.Treloar = 19<sup>th</sup>, L.Oakley = 20<sup>th</sup>]*

**WEDNESDAY 21<sup>st</sup> JANUARY 2026**  
 Y10 Girls Netball: Hellesdon 3-14 OVA and Hellesdon 4-4 Thorpe  
*[Player of the Tournament: A.Pond]*

**THURSDAY 22<sup>nd</sup> JANUARY 2026**  
 Y8A Boys Football (County Cup QF): Hellesdon 1-1 Lynn Grove (AET - Lynn Grove won 3-2 on penalties)  
*[J.Fletcher]*




## PE FIXTURES & EVENTS

w/c 26<sup>th</sup> January 2026

**TUESDAY 27<sup>th</sup> JANUARY 2026**  
 Y7A Boys Football: Pathway Cup Round 1 v. OVA (h) *[KO: 2.30pm / Finish: 4pm]*

**WEDNESDAY 28<sup>th</sup> JANUARY 2026**  
 Y7-9 Panathlon Event @ UEA Sportspark *[Leave: 9.15am / Return: 1.30pm]*  
 U15 Girls Football: v. Fakenham (a) *[Leave 2pm / KO: 3pm / Return: 5pm]*

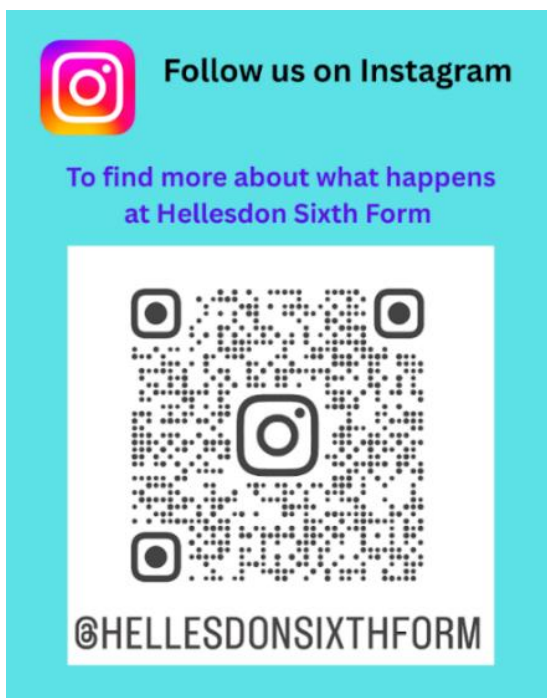





## NEWS FROM OUR SIXTH FORM


### Congratulations!

Former A Level Film studies student, Alanna has been 'Highly Commended' by the Eduqas Moving Images Awards, go to our [News Story](#) to read more.



 **Follow us on Instagram**

To find more about what happens  
at Hellesdon Sixth Form



@HELLEDONSIXTHFORM

### Attendance Matters



We're committed to working with parents and carers to ensure your child feels happy and safe in school. If you have any questions or concerns, please contact the school office.

Call us: 01603 424711

Email us: [principal@hellesdonhigh.norfolk.sch](mailto:principal@hellesdonhigh.norfolk.sch).