



Lesson Sequence

1. Understand the life processes of a plant.



2. Understand the life cycles of mammals.



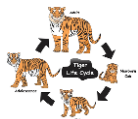
3. Compare the life cycles of insects and amphibians.



4. Understand the life cycle of birds and reptiles.



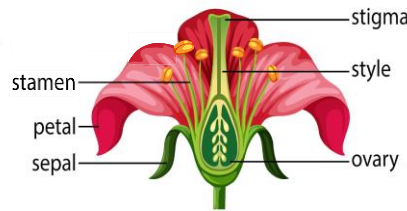
5. Know about the life and work of Jane Goodall and David Attenborough.



Reproduction in plants

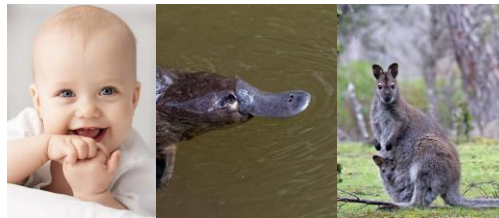
Plants contain both male and female cells. Some need to be pollinated in order to be fertilised. Others use asexual reproduction to reproduce.

Common Flower Parts



Mammals

Mammals reproduce and give birth to live young. They can be either placental, monotreme or marsupial.



Birds and Reptiles

Most birds and reptiles are born when the mother lays eggs and incubates them until they are ready to hatch. Once the egg is hatched, the baby is looked after by the mother before leaving the nest.

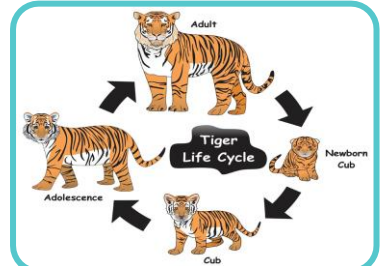
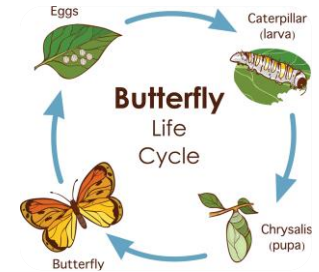
Important People

David Attenborough and Jane Goodall study living things. They present the life of animals on earth and have made important documentaries so we can learn about the world around us.



Metamorphosis

Amphibians are a bit different. Many are born live or underwater. They complete a metamorphosis as adults and can live and breathe on land. Metamorphosis is the change in body form and habits during the life cycle.





Unit Rocket Words: Living Things and their Habitats



Rocket Words

living organism

something that can move, use energy and reproduce

naturalist

an expert in the studies of natural history

primatologist

a person who carries out a scientific study of primates

metamorphosis

when insects and amphibians transform from larval stage to their adult form

endangered

an animal is considered endangered when there are very few of them alive

asexual

where only one parent is needed to create offspring

reproduction

to make offspring either sexually or asexually

fertilisation

when a sperm and egg cell join together

placental mammal

has live young which develop before birth inside a female mammal

monotreme mammal

a mammal who lays eggs to reproduce