

# 'FRIENDS OF' LODGE LANE

Registered Charity number 1186022

Dear Parents and Carers

Welcome to our summer newsletter. We had a committee meeting recently and we are busy planning lots of fun things for the summer months which we know the children will enjoy.

Thank you for all your support for the events we ran during the past few months. We raised the following amounts from these events, after deducting costs incurred:

- |                         |         |
|-------------------------|---------|
| ● Mother's Day Shop     | £112.87 |
| ● Easter Egg Hunt       | £257.26 |
| ● Colouring Competition | £76.54  |
| ● Lottery (Spring Term) | £127.35 |
| ● Clothes Bin           | £22.60  |
| ● Stay and Play         | £95.66  |

We are planning to support the following events coming up:

- Contribution to school trips £3 per pupil
- Whole school theatre trip
- Ducks, chicks and caterpillars

## SUMMARY OF DATES FOR YOUR DIARIES

| EVENT                            | DATE  |
|----------------------------------|---|
| Sponsored Move                   | 1st May 2026 - 15 May 2026  |
| Park Run Takeover                | Sunday 10th May 2026 9am  |
| Frozen Friday                    | Friday 15th May 2026  |
| Frozen Friday                    | Friday 12th June 2026   |
| Father's Day Shop                | Friday 5th June 2026<br>(Scopay cut off Tuesday 2nd June 8am)   |
| Tombola Non-Uniform Day          | Friday 12th June 2026   |
| Summer Fair                      | Friday 26th June 2026   |
| Summer Parties and Parent Creche | Thursday 9th July –<br>YR 3.15 - 4.15pm<br>Y1 4.30-5.30pm<br><br>Friday 10th July 2026 –<br>Y2 3.15-4.15pm<br><br>(Scopay cut off Tuesday 7th July 8am) |

## **UPCOMING EVENTS**

### **Sponsored Move - 1st - 15th May 2026 with Parkrun Takeover 10th May 2026**

A new event this year, we are organising a sponsored 'move'. Have a look at the poster below - the children can pick their own activity and feel free to bring them along to the junior parkrun takeover if they wish (a free event and this can be their sponsored activity if they would like).

The children can get together with friends, think of an activity themselves or join the Junior Parkrun.

Sponsor forms and envelopes will be sent home in book bags on the 1st May and the children have 2 weeks to get sponsored and complete their chosen activity. We are a charity so will be able to claim gift aid as long as the details are filled out on the sponsorship form. Forms and money envelopes need to be returned to the school office or class teachers by Friday 22<sup>nd</sup> May.

### **Frozen Fridays – 15<sup>th</sup> May and 12<sup>th</sup> June 2026**

Ice creams and lollies for sale after school in the back playground. Prices from 50p-£1.

### **Father's Day Shop - Friday 5th June 2026**

We will be running a shop for Father's Day (or a special person) on June 5th 2026 during school hours. Donations can be made via Scopay, which are £2 each gift. Each class will then take turns to come along to our shop and choose a gift, which they can then bag and write a tag for. We have a few of our committee helping with this. In previous years this has been a lovely activity for them to enjoy and choose a gift themselves. We have some great gifts available. You can buy multiple gifts if you would like but, if you do, on the day it would be helpful to let your child know who they are buying for (e.g. Uncles, Grandparents etc.).

**The closing date for Scopay payments is Tuesday 2nd June 2026 @ 8am.**

### **Summer Fair - Friday 26th June 2026**

We are now in full planning mode for our summer fair which is taking place on Friday 26th June 2026 from 5pm - 8pm. This is our biggest event of the year which takes lots of planning and we need lots of help for.

#### ***Raffle***

If anyone would like to donate a prize for the raffle or has contacts with any businesses who may be able to help us, we would be really grateful. If you can help with this, please email us on [llisfriendsof@gmail.com](mailto:llisfriendsof@gmail.com)

Raffle tickets will be able to be purchased before the event and will come home in book bags after half term.

#### ***Tombola non-uniform day - Friday 12th June 2026***

We are holding a non-uniform day on Friday 12th June. We are asking in return, if possible, for tombola prizes to be donated. We are holding an adult and child tombola – any donations of toys, puzzles, crafts, gift sets, wine etc would be greatly appreciated. Please hand these over to your class teacher on the day. Please remember we are a **nut free** school, thank you.

### ***Cake donations***

We are asking for cake donations on the morning of Friday 26th June. We would appreciate any home bakes, sweet and savoury to be donated for our cake stall. You do not have to bake, we also appreciate any shop bought donations. These will then be available at the fair for sale.

**Please make sure these have ingredients listed, are nut free and are in a named container so we can return these to you afterwards.**

### ***Lucky bag envelopes***

We will be sending out envelopes for our lucky bag game. If your child would like to decorate and fill these with a few small items and return to school we will then sell these at the summer fair. These can include sweets, small toys or anything you think a child would enjoy opening as a surprise. More details on this will follow when we send them out to you just after half term.

### ***Help on the day***

We will also be looking for volunteers to help us run some of the stalls on the evening of 26th June and also the set up during the afternoon and to tidy up after the event. We will use an online sign-up tool and post links to this on Facebook and WhatsApp chats. If you are able to help at the event even if only for part of the evening and not the whole event, we would be really grateful. We cannot put events like this on with just the committee alone.

### **Summer parties - Thursday 9th July and Friday 10th July 2026**

These are being held after school on Thursday 9th July and Friday 10th July. Each year group is separate, and the teachers also help. The party will be music, party games, a snack and a drink. Just to reassure parents this won't be a really loud disco as we are aware not all children enjoy that. The times will be as follows....

#### ***Thursday 9th July***

YR 3.15 - 4.15pm

Y1 4.30 - 5.30pm

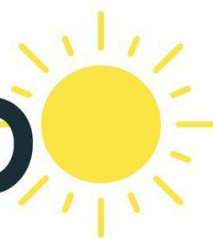
#### ***Friday 10th July***

Year 2 3.15 - 4.15pm

The party will cost £2 per child and this is payable via Scopay. **The scopay deadline for payment is Tuesday 7th July at 8am.**

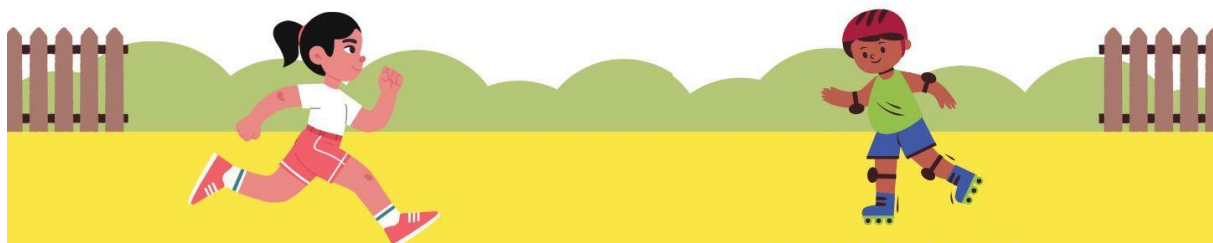
If your child goes to Cheeky Monkeys after school they will still be able to attend the party but please liaise with them regarding this.

# SPONSORED MOVE



A fun sponsored event for the children of Lodge  
Lane Infant School

**1st - 15th May 2026**



## 1. CHOOSE YOUR ACTIVITY

E.g run, skip, jump, scoot, swim,  
dance - anything which gets you  
moving.

## 2. SET THE CHALLENGE

E.g. run 2km (see park run take over), skip  
all the way to school, dance for 1 hour, swim  
10 lengths, ride your bike round the park 5  
times—anything that is a challenge based  
on your own abilities.



## 3. ASK FRIENDS AND FAMILY TO SPONSOR YOU

Either by distance e.g. 50p per kilometre or  
to complete the challenge

## 4. COMPLETE THE ACTIVITY BY FRIDAY 15TH MAY 2026

**5. COMPLETED FORMS AND MONEY TO BE BACK AT SCHOOL  
BY FRIDAY 22ND MAY 2026**

Need an activity for the sponsored  
move?

# LODGE LANE JUNIOR PARKRUN TAKEOVER



**SUNDAY 10TH MAY 2026**



**WATERLOO PARK**



**9AM (8.45 FOR FIRST TIMERS  
BRIEFING)**



## What is Junior Parkrun?

Junior parkrun is a free, weekly, community running event for children aged 4 to 14. It is designed to be fun, friendly, and inclusive, encouraging young people to be active outdoors.

What happens at a junior parkrun?

- It is a 2-kilometre event for age 4-14 – the nearest one is Waterloo Park held every Sunday morning at 9am.
  - Children can walk, jog, or run – it's not a race and there's no time pressure.
- Courses are fully marshalled, ensuring every child is always in sight of a volunteer. You can run/walk with your child or cheer them along as they go round themselves.
- It's completely free – you just need to register once to get a barcode used to record results

**HOW TO REGISTER**

**[WWW.PARKRUN.COM/ABOUT/  
JOIN-US/JUNIOR-PARKRUN](http://WWW.PARKRUN.COM/ABOUT/JOIN-US/JUNIOR-PARKRUN)**

## Other ways to help

A reminder of the other ways which you can help support our fundraising efforts.

### Clothing Bin/Pre-Worn Uniform

If anyone's child has outgrown their uniform and it's in a good used condition, please consider donating this to us for resale. We have a stock of uniform in the foyer near the school office with a suggested donation of 50p per item. Please ensure you only donate things, which are the quality you would want to buy.

We also have a clothing bin in the school car park. Please donate any clothes, shoes, belts or handbags (or uniform which has seen better days, so can't be resold). These need to be in carrier bags and please no soiled items. We raise funds based on the weight of the items which are taken away periodically.

### Stay and Play

Every Wednesday during term time the committee runs the stay and play in the main hall from 8.35am - 10.00am. We have crafts, songs, tea, coffee and biscuits. The cost is £2 per family.

### Match Funding

Do you work for a company which offers matched funding? Some companies offer donations to charities where their employees help to raise money. For example, if you worked for one of these companies and volunteered at one of our events we may be able to claim additional monies from your employer to match the amount you helped to raise. Last year we gained £1,000 from Aviva but this year no-one has come forward but would be great to change that.

### Volunteering Days

Some companies also offer a volunteering day or hours for their employees to enable them to give their time to charitable causes. If this is something your employer offers and you would like to help us then please let us know.

**How you can help Friends of Lodge Lane**

- Lodge Lane Infant School**  
Everyone Learning Together.
- Support**  
Support our fundraising events whenever you can... buying raffle tickets, ice-creams, donating prizes etc
- YOUR SCHOOL LOTTERY**  
A weekly lottery where you can earn the school money and be in a chance of winning prizes yourself
- [STAMP]tastic**  
the fastest way to name  
Use the PTA code NR67HL when making purchases at stampastic and we get commission
- VOLUNTEER**  
Our larger events usually require more help than the committee alone can give so we ask for some of your time
- SALE**  
Buy pre-loved school uniform from the boxes in the school reception (& donate any good quality items you no longer need)
- easyfundraising**  
feel good shopping  
Visit the easy fundraising website or app before making purchases online to see if the retailer offers any % donations
- Lodge Lane Infant School**  
Everyone Learning Together.

## Your School Lottery

The below gives some more information about the school lottery and how you can support it. This is a weekly draw and as well as the main national prize one of our supporters wins a smaller amount each week.



## USEFUL LINKS

- <https://www.yourschoollottery.co.uk/lottery/school/lodge-lane-infant-school>
- <https://www.facebook.com/Friends-of-Lodge-Lane-Infant-School>
- For other online shopping check out easy fundraising, you can raise money for your school without even having to put your hand in your pocket.  
<https://www.easyfundraising.org.uk/causes/lodgelaneinfants/donation/>
- We have a partnership with Stamptastic whereby any sales via the link below generates money for the school PTA <https://stamptastic.co.uk/> 'PTA' code is the NR67HL

## And finally.....

Thank you to all parents, families and carers who support the Friends of Lodge Lane and the school.

None of the events could go ahead without the brilliant work of the committee members including buying gifts, easter eggs, organising BBQ stalls, sourcing fun prizes, wrapping Christmas books. A massive thank you to everyone who has helped these last couple of terms.

**We still need more support from parents** and specifically require a treasurer to take over in September (no experience necessary) **otherwise we cannot continue to fundraise for the school,** please let us know if you can help in any way.