



## **Notice of plans to create a new three class Specialist Resource Base (SRB) at Hellesdon High School**

Dear Parents and Neighbours,

As part of Norfolk County Council's commitment to invest in Special Education Needs across the county, we are proposing to build a Specialist Resource Base (SRB) equipped for children with Social, Emotional and Mental Health (SEMH) needs at Hellesdon High School. The SRB will cater for 24 secondary aged children in three classes.

A design team from Norse Consulting have been working closely with Children's Services on possible solutions and we are close to agreeing a final design. Norse Consulting anticipate submitting a planning application at the beginning of June and before doing so we would like to share the proposal with parents and local residents.

Children's Services will be holding an informal exhibition event on Tuesday 19<sup>th</sup> May at Hellesdon High School, between 3.00pm and 5.00pm. This is an open, drop in, event and no booking is necessary.

Representatives from Norse Consulting, Children's Services and the school will be available to answer any questions you may have about the proposals. The outline proposals are attached overleaf.

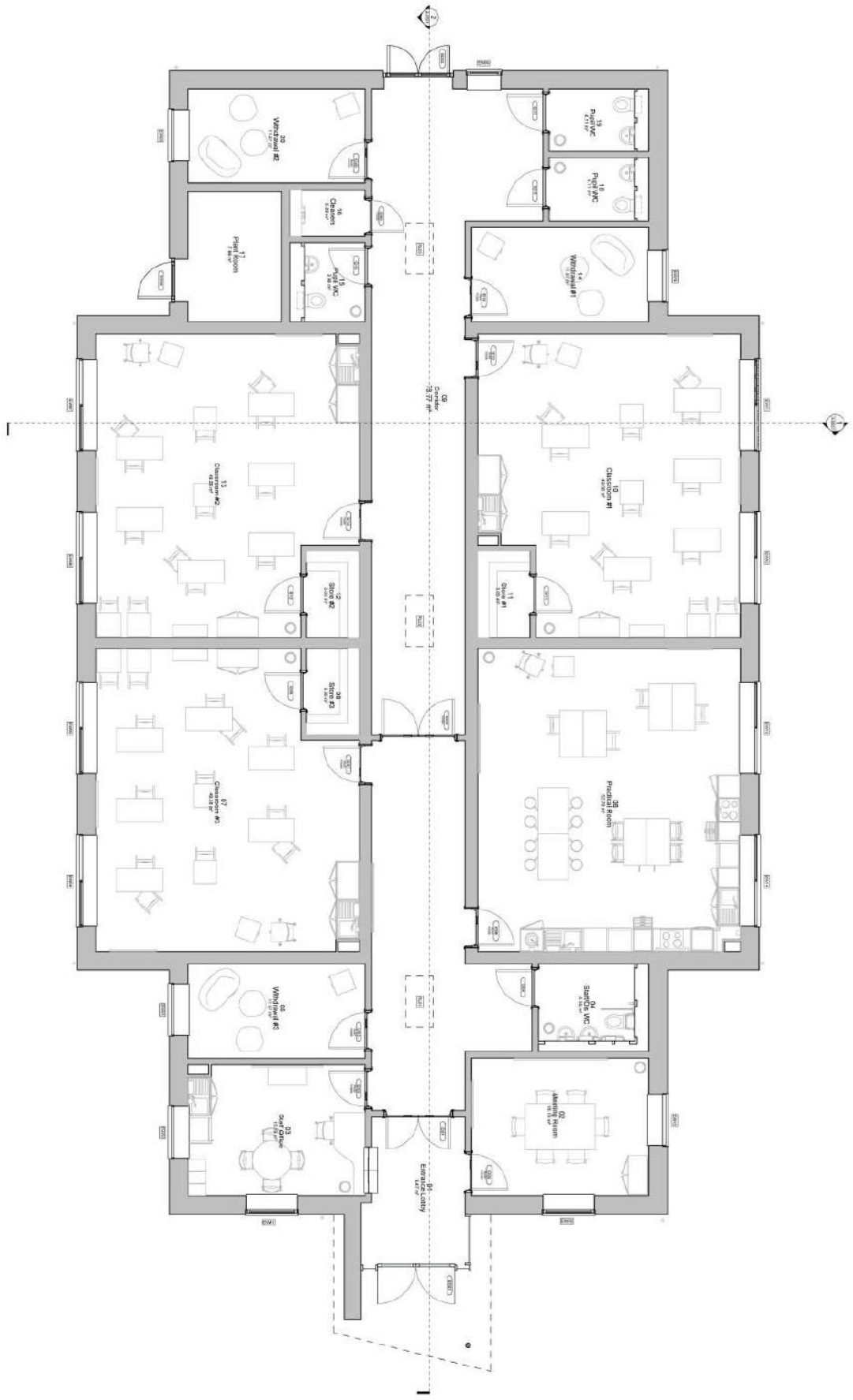
Once the planning application has been submitted there will be the opportunity for individuals and interested parties to express their views to the planning authority as a formal submission. If approved, it is hoped work will start in January 2027, and have a build duration of approximately 8 and a half months.

Please be aware that these plans and dates are provisional and are subject to change. Please check the Norfolk County Council Planning website once the application has been submitted for up-to-date information.

If you would like to discuss any of the above or have any queries regarding the proposals please contact Jamie Tolman, Children's Services Project Officer by email on [schoolreview@norfolk.gov.uk](mailto:schoolreview@norfolk.gov.uk)

If you need this document in large print, audio, Braille, alternative format or in a different language please contact Customer Services 0344 800 8020 or 18001 0344 800 8011 (textphone) and we will do our best to help.

# Building Plan





Proposed Site Plans