



Welcome to Lodge Lane!



Key Staff



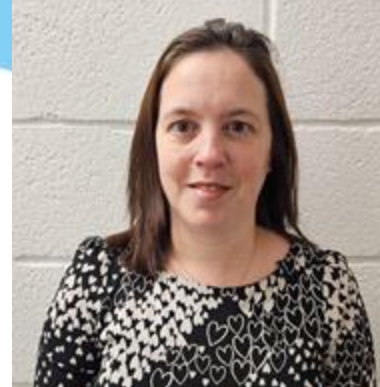
Belinda Banham
School Secretary
Aitken
Support Worker



Sarah Spears
Head of School



Sarah Waterfield
Executive Headteacher



Shelley Leggett
SENDCO



Rachael
Family

Tiger Class



Leanne Davey
Joubert
Teacher (Monday)



Sarah Cork
Teacher (Tues - Fri)



Roisin Surtee



Trina Marshall
EPA (Mon - Thurs)



Hannah Woodruff
EPA (Friday)

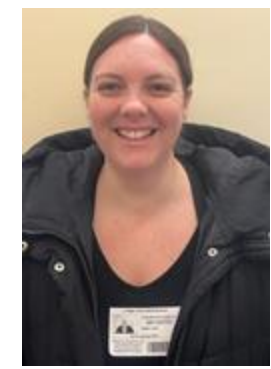
Panda Class



Rachel Campbell
Teacher (Mon/Tues)



Kirsty
Teacher (Thurs/Fri)



Leanne Davey
Joubert
EPA



We will ensure that your child:

- Feels safe, secure and cared for.
- Is known as an individual.
- Is treated with kindness and respect.
- Builds confidence and independence.
- Develops friendships and a sense of belonging.
- Is challenged and supported to make excellent progress from their starting point.
- Learns through engaging and exciting experiences.
- Is encouraged to be curious, resilient and proud of their achievements.

Our promise to you

You can expect us to:

- Provide a nurturing environment where children feel happy and confident. Communicate openly and honestly.
- Listen to any concerns and respond promptly.
- Keep you informed about your child's progress and wellbeing.
- Celebrate successes as well as support challenges.
- Maintain high expectations for every child.
- Work closely with you when additional support is needed.





★ Attendance & Punctuality ★

Communication between Home and School

★ Support at Home ★

- Read at home
- Talk about school
- Encourage independence
- Ensure a good bedtime routine
- Not too much screen time
- Watch age appropriate materials

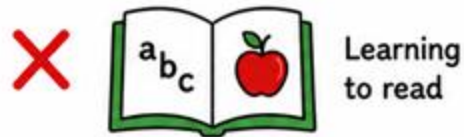
Positive Messaging

- Speak positively about staff
- Show confidence in staff
- A quick and cheery goodbye

Your teacher is so kind and really helps everyone.

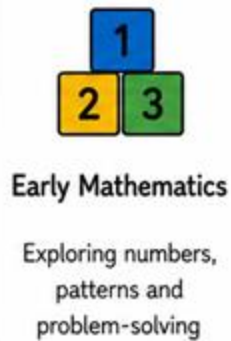
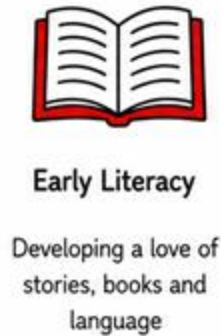
I know they'll take care of you.

How can you prepare your child for Reception?



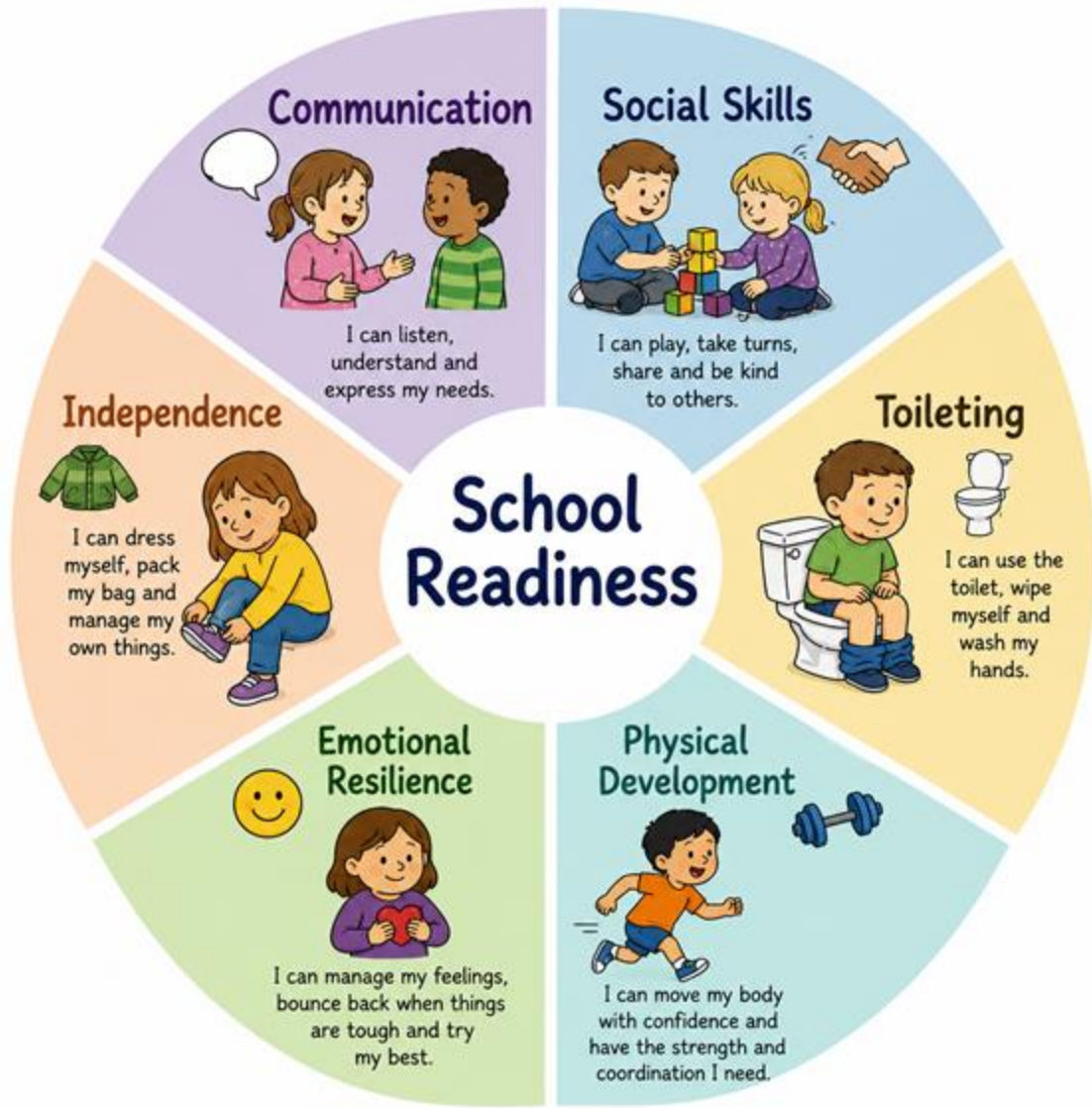
These things are helpful, but school readiness is about much more than this.

Reception focuses on:



Reception is about helping children become confident, independent, resilient learners who are ready to thrive.

A day in the life of a Lodge Lane Reception child...







What happens now?



Home Visits

Getting to know you and your child



We will visit you and your child at home.



A chance to get to know each other.



Helps your child feel happy and confident about starting school.



An opportunity to talk about your child and ask any questions.

We look forward to meeting you! ❤️

Panda Class	29th June
Tiger Class	6th July
Panda Class	7th July
Tiger Class	8th July
Panda Class and Tiger Class	10th July

You will already have been emailed your date and time.

Transition Days

<p>Friday 19th June 1:30 - 2:30pm</p>	<p>In Reception outdoor area (weather permitting) Come in the Reception gate - this will help children know where to come in September Parents to stay and play Reception staff will be playing alongside and beginning to make first relationships</p>
<p>Tuesday 23rd June 1:10 - 2:10pm</p>	<p>In Reception classrooms Come in the Reception gate again Parents are encouraged to settle their child to an activity and then go to the Hall for tea, coffee and cake and to get to know some other parents If your child is particularly unsettled, you can stay with them if needed</p>

What Children Need for School



Lodge Lane Infant School
Book Bag



Water Bottle



Spare Clothes



Wellies



Waterproof Trousers



Warm, Waterproof Coat

Please name EVERYTHING!!!

Staggered Start

Thursday 3rd September	Group A - Morning (8:30/8:50 - 10:30am)	Group B - Afternoon (1:10 - 3:00pm)
Friday 4th September	Group A - Afternoon (1:10 - 3:00pm)	Group B - Morning (8:30/8:50 - 10:30am)
Monday 7th September	All Children (8.30/8:50 -11.00am)	
Tuesday 8th September	All Children (8.30/8:50 -11.30am)	
Wednesday 9th September	All Children (8:30 - 1:15pm - to include staying for lunch)	
Thursday 10th September	Full time for everyone	

Daily Routine



The doors to the classrooms **open at 8:30am**
and close at 8:50am.

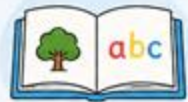
You can bring your child at any point during
this 20 minute interval.



You will drop your child off and
pick them up at **3pm** at their classroom door.



Fruit is provided in the morning.
Children may bring fruit from home if you prefer.



We have short whole class focuses
which include stories, phonics and maths.



Children have the opportunity to freeflow,
work individually, or in small groups.



Lunch is at **11.45** and class staff will initially
stay with your child to make sure they are settled.

Breakfast and After School Club



Breakfast Club

7:15am to start of school day

The Breakfast Club offers a healthy breakfast of cereals, toast, fresh fruit with milk, juice and water to drink. Activities are relaxed and focussed with the aim of creating a calm start to the day.

Cost: £5.75 per session.



After School Club

3pm – 6pm

The After School Club offers free play sessions. With a wide range of indoor activities for the children to choose from including role play toys, construction, arts and crafts. Outdoor play opportunities are available too. After School Club offers snack daily. Foods you may find on our menu include toast, wraps, pittas, crackers & raisins etc.

Cost: £4.50 per hour.



Ways to get involved



Reading Volunteers

Share your love of reading by listening to children read and supporting their learning.



Friends of
Lodge Lane



Friends of Lodge Lane

Get involved in our Friends of Lodge Lane to help raise funds and support our school community.



School Events

Join us at school events throughout the year – a great way to get involved and have fun!



Share your skills and interests

Do you have a hobby, skill or job you'd be happy to share with the children? We'd love to hear from you!



Trips

Help make our trips and visits a success by volunteering your time.

Meet the Friends of Lodge Lane Infant School



Danielle Crosswell
Chair



Stacy Lambert
Vice Chair



Becky George
Treasurer



Jess Kent
Secretary



**Pibde
Mobbs**



**Lauren
Milton**



**Zoe
Goddard**



**Zoe
Gusterson**



**Hayley
Maskell**



**Lee
Howard**



**Mark
Cudmore**



**Rachel
White**



**Louise
Howard**



**Hollie
Amber**



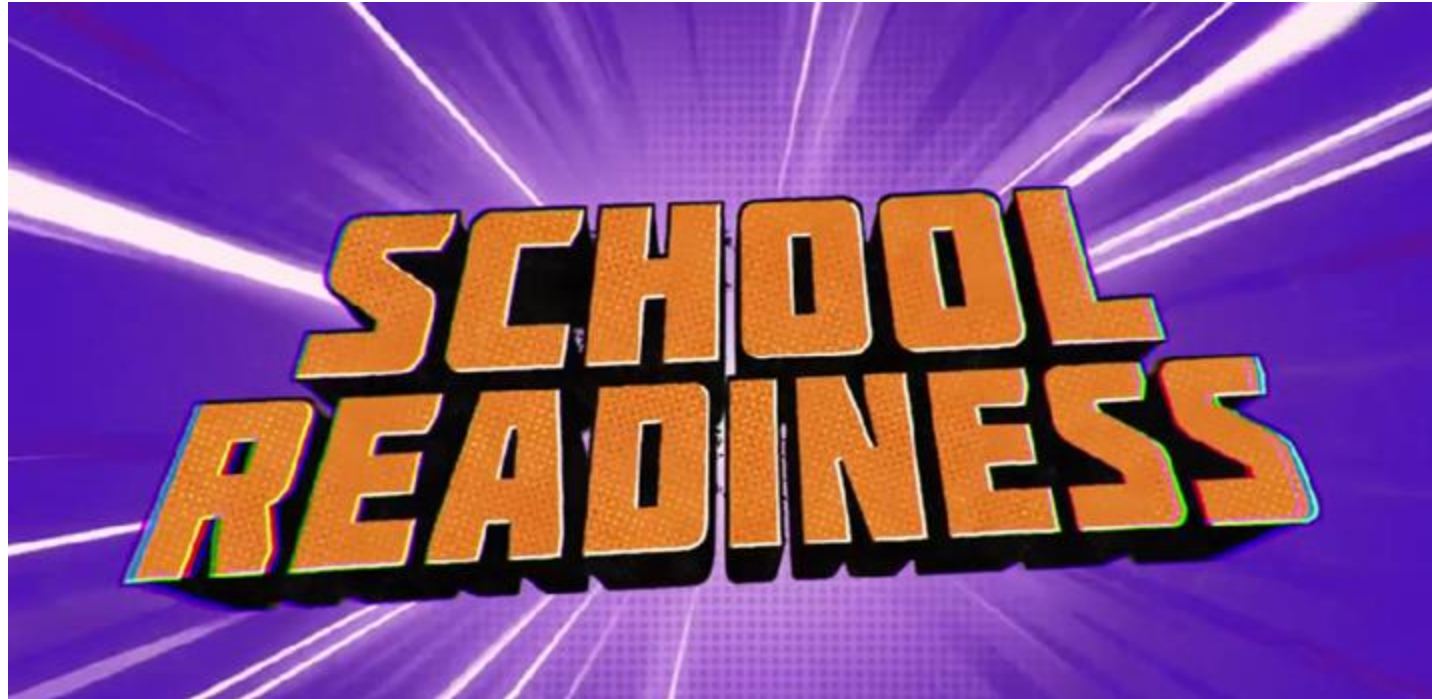
**Becky
Ellis-Huggins**



**Alice
Coates**

if you'd like to get involved, please email
us on llisfriendsof@gmail.com

Final thoughts - you could show this to your child if you think it would be helpful.



Questions?

Please feel free to come and chat to us after the meeting.
We look forward to meeting you all.